

# KIMBERTON HUNT CLUB 78<sup>TH</sup> ANNUAL HORSE SHOW

SUNDAY, APRIL 30<sup>th</sup>, 2023



Ludwig's Corner Show Ground • 5 Nantmeal Road, Glenmoore PA

PHSA Regional / USHJA Outreach / AHS

**\$7500 Mini-Prix** sponsored by Silver Lining Farm, Birdsboro

**\$1000 Open Gambler's Choice** sponsored by Silver Lining Farm, Birdsboro

**\$1500 Jumper Team Challenge**

**\$800 Welcome Jumper Stake** sponsored by Riviello Sawmill, Birdsboro

**\$1500 Jr. & \$1500 Open High Jump** sponsored by Shirk's Shoeing, Birdsboro

**\$1000 BEAVER HILL FARM 2'6 Hunter Derby** sponsored by Beaver Hill Farm

**\$500 FENCEWORKS 2' Hunter Derby** sponsored by Fenceworks

**\$250 Fox Hunter Divison**

**\$500 Hunter Team Challenge** sponsored by Barbara & Sandy Dunn MFH, Chester Springs

**Best Child Rider, Turn Out, & Style Awards**

**\$18,000.**

*in prize money -*

*Jumper payout guaranteed!*



Proceeds support the Penn-Marydel Hounds of Kimberton Hunt Club



*Grand Champion Sponsors:*

Anonymous



Barbara & Sandy Dunn, MFH

Pickering Valley Feed & Farm Store

Dr & Mrs Donald J Rosato / St. Matthew's Place

Hunters, Jumpers, Equitation,  
TBs, Derbies, Team Challenge,  
High Jump, In-Hand, & Foxhunters

[KimbertonHunt.org](http://KimbertonHunt.org)

  @KimbertonHuntClub

**Pre-enter by 9 PM on Weds. April 26<sup>th</sup>**

**at [horseshowing.com](http://horseshowing.com)**

or email entry info to [JackKate@aol.com](mailto:JackKate@aol.com)

# PICKERING VALLEY FEED & FARM EXPERTISE



**Get the supplies and answers you need for a healthy horse and a healthy pasture.**



**For more info visit [pickeringvalleyfeed.com](http://pickeringvalleyfeed.com)**

**WE DELIVER!**

Contact us at

**610-363-8810**

for more information

**\$2 OFF**

**ALL**

Purina Mills Products

Offer good through June 2023

Offer IN STORE ONLY. Maximum of 5 bags



The following have been invited to officiate.  
The Committee reserves the right to vary or add to these names.

**JUDGES**

Jerre Frankhouser – R H/HE/J  
Michelle Morosky – R H/HE  
Pam Landis - R H/HE/J  
Shane Ledyard - r H/HE

**VETERINARIAN ON CALL**

Alliance Equine Health 610-942-9866

**ANNOUNCERS**

John Hausladen & Wendy Silverwood

**FARRIER ON PREMISE**

Shirk's Shoeing 610-587-6861

**EMT**

Karen Boland Hughes

**CO-SHOW MANAGERS**

Barb Mueller & Wendy Silverwood  
info@kimbertonhunt.org

**COURSE DESIGN**

Kimberton Hunt Club

**SHOW OFFICE**

Katie Benson & Eric Clausen  
JackKate@aol.com Day of Show: 908-800-3135

**HOSPITALITY**

Kimberton Hunt Club

**TROPHIES & PRIZES**

Becca Pelet, Erin Hails & Donna Park

**SPONSORS/ADVERTISING/WEBSITE/PRIZE LIST**

Meridith Robinson, Susan Smith, Becca Pelet,  
Mimi Quillman & Wendy Silverwood



**Attention:**

This Prize List has  
**LIVE LINKS**

Please click on the **ads & underlined text** to open supporting web content.



- Rider Apparel
- Ringside Packs
- Show Bows
- Spur Straps
- Belts
- Boot Socks
- Grooming Supplies
- Halters
- Splint Boots
- Fake Tails
- Saddle Pads
- Accessories
- Gifts & More!



**Chester County Equine Events llc.**



Fundraising for our  
Young Equestrians



Mark Powell

powellequinedentistry@gmail.com

tel. (443) 910-1082



SPONSOR OF THE  
\$500. Fenceworks  
Jr/Am 2' Derby

FENCEWORKS

A full-service fence installation & wholesale fencing supplier

[www.fenceworks.net](http://www.fenceworks.net)



Please thank & support our generous sponsors for providing \$18k in prize money!



1420 Little Conestoga Road, Glenmoore



26 Winterberry Drive, East Rockhill



670 Church Road, Malvern



200 Grove Road, Elverson

*Chester County's Oldest Independent Realtor*

At James A. Cochrane, Inc. we know that it's not just about buying or selling a home. It's about building long lasting relationships with our clients and our community, and ever since 1960 we've been doing just that all over Chester County. We believe deeply in the restoration and preservation of historic homes, farms, and communities. From family homes to large estates we love helping our clients find their dream homes. Visit us at our offices at the old train station in the village of Kimberton, PA or online at [www.cochraneinc.com](http://www.cochraneinc.com).



James A. Cochrane Inc.  
REALTOR

PO Box 608, Kimberton, PA 19442 610-469-6100

- \$7500 Mini-Prix
- \$1000 Open Gambler's Choice
- \$1500 Jumper Team Challenge
- \$800 Welcome Jumper Stake
- \$1500 Jr. High Jump Contest
- \$1500 Open High Jump Contest
- \$400 Itty Bitty Jumper Stake
- \$400 Preliminary Jumper Stake
- \$400 Low Child/Adult Am. Stake

- \$500 FENCEWORKS 2' Hunter Derby
- \$1000 BEAVER HILL 2'6 Hunter Derby
- \$250 Fox Hunter Handy
- \$500 Htr. Team Challenge
- \$100 Adult Am. Htr. Stake
- \$100 Low Adult Htr. Stake
- \$100 Children's Horse Stake
- \$100 Low Children's Horse Stake
- \$100 Children's Htr. Pony (S/M) Stake
- \$100 Children's Htr. Pony (L) Stake
- \$100 Low Children's Pony Stake



REGISTER  
ONLINE





# RULES & REGULATIONS / EXHIBITOR INFO

*All questions not covered in these rules & regulations shall be decided by the show management whose decision shall be final.*

1. Pre-Entries close the Wednesday prior to the show at 9:00 P.M. *Please pre-enter!*

**Online:** [www.Horseshowing.com](http://www.Horseshowing.com)

**Email:** a pdf of your completed & signed entry blank to: [JackKate@aol.com](mailto:JackKate@aol.com)

**Post entries MAY be accepted**, if the schedule allows, and will incur a \$25.00 post entry fee. Post Entries close 12 noon on Saturday. No Walk-Ins. Complete your entry blank with correct info for owner, rider, trainer and horse with the required signatures and bring any relevant documentation to the show. Incomplete or illegible entries will incur a post entry fee. (i.e. please do not use "same" when completing entry) No charge for Scratch/Adds done with the office. All entries not paid at the horse show will incur a \$50.00 late payment fee. All returned checks will incur a \$30 fee.

2. A \$27.00 fee will be charged to all entries to cover EMT/Office/Grounds/Outreach fees. (Lead Line exempt)

3. Entries can be paid with Cash, Credit Card, or a signed open Check made payable to "Kimberton Hunt Club" with your completed & signed entry at the show office. Credit cards will incur a fee.

4. A current negative Coggins must accompany your entry at the show office. Please bring your horse's documentation of EIV & EHV vaccinations.

5. Class fees are \$30 per class unless otherwise noted. 8 Ribbons unless otherwise noted. Champion & Reserve Champion awarded in all divisions based on points won in classes throughout a section. Please allow 30 minutes after the end of a division for the show office to compute Champion & Reserve. Juniors wishing to be considered for Best Child Rider on a Pony (Ring 3) and Best Child Rider on a Horse (Ring 2) awards must wear a light blue armband. Armbands available for purchase in the show office for \$5.

6. To be eligible for a Hunter Stake class, the exhibitor must show in at least one other class in the same division. To be eligible for the Mini-Prix, the horse must have competed in the Welcome Stake.



1251 Ridge Road (rt. 23) Pottstown  
610-469-0111

Mon & Sat: 10am - 5pm  
Wed-Fri: 10am - 6pm  
Sun: 11am - 4pm  
Tue: CLOSED

Proud Sponsor of the  
\$1,000. BEAVER HILL FARM  
JR/AM 2'6" DERBY



Dear Competitors,  
We are excited to sponsor this fun, inviting class again  
in 2023. Put in the work and we know you will have a  
great ride come show day!

Kick On!  
Karen & Edward Cook



**YOUR GO-TO  
EQUESTRIAN BANK!**

Malvern's Equestrian Division is committed to helping you  
address the unique challenges you face as an equestrian.

That's why we have an improved and increased *Unsecured Line of Credit Line* —  
it offers up to \$100,000 and is based primarily on credit score.

We can help you achieve your goals; whether renovating stables, purchasing a new trailer,  
new training equipment, or a new horse... we understand.

*Let's Start the Conversation Today!*



**Hillary Dobbs** VP / Director of Equestrian

561.657.0969 • HDobbs@MyMalvernBank.com • MyMalvernBank.com



Unsecured Line of Credit Disclosure:

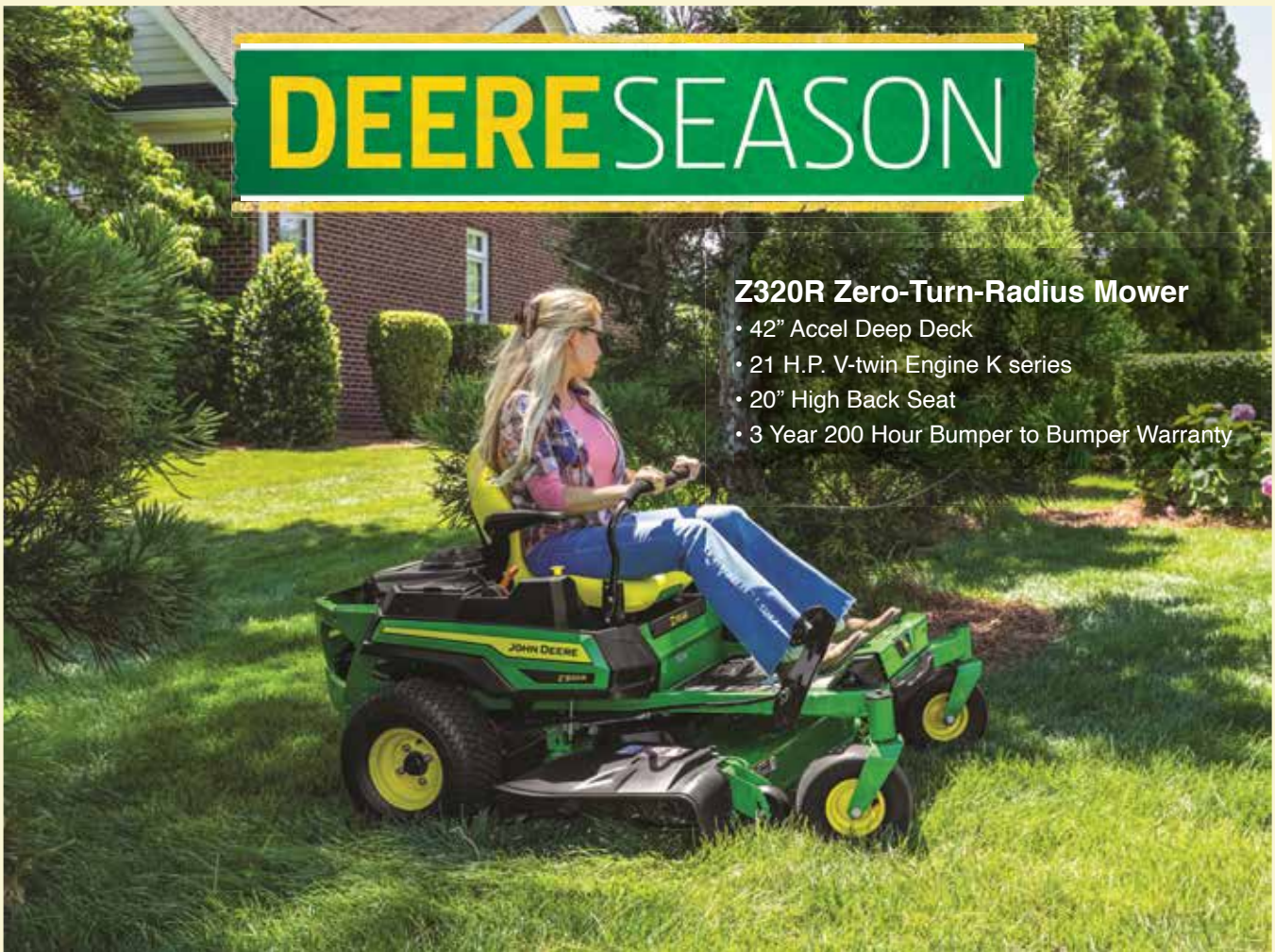
Offer valid 11/15/2022. Unsecured line amount minimum of \$2,000 with maximum of \$100,000 depending on credit score. A minimum credit score of 680 required. Terms for credit products are subject to final credit approval of the person or business and its owners. Income verification requirements apply. Auto-Debit payment required. The variable Annual Percentage Rate (APR) of the Line of Credit will be based on the Wall Street Journal Prime (WSJP) plus 3.0% with a floor of 7.0%. Prime Rate is subject to change at any time. An application fee of \$125 will be assessed for business applicants. Interest accrues immediately whenever you use your Line of Credit and will continue if a default occurs. In such case we may also exercise our right to change the terms of the Line of Credit, up to and including freezing or closing the Line of Credit. Re-payment at the end of the Draw Period for outstanding principal balance at expiration of draw period term with a 5-year amortization. Rate will be set based upon WSJP 30 days prior to settlement + 3.0%, floor of 7.0%. Terms and conditions apply.

Other restrictions may apply, including possible State restrictions. Wall Street Journal can be found at [www.wsj.com/market-data/bonds/moneyrates](http://www.wsj.com/market-data/bonds/moneyrates).



7. It is the exhibitor's responsibility to know their eligibility to compete in any class at this show.
8. Prize money will be applied to exhibitor's account. Any checks must be cashed within 30 days or they will not be honored. No refunds on prize \$ classes once the order of go has been established or division has started.
9. Riders must wear properly fastened ASTM/SEI approved protective headgear while mounted anywhere on the competition grounds. No ear bud or cell phone use while mounted or lunging on the grounds.
10. Hunter courses may include gates, walls, brush, coop, post and rail, oxers, in and outs, and combinations. Jumper courses may include verticals, oxers, panels, gates, spreads, combinations.
11. Hunters will be judged on performance, soundness and manners.
12. A jump order will be established at the gate with the starter. Mini-Prix order of go will be determined by the placings in the Welcome Stake.
13. All ties in jumpers, other than first will be broken by time.
14. Every horse entered for competition will do so with the agreement that they have read the Official Prize List & Entry Blank and agree to follow all class specifications, rules, requirements, regulations and conditions in the Official Prize List and on the Entry Blank.
15. The Kimberton Hunt Club, The Horse Show, The Show Committee will not be held responsible for any loss, damage or accident that may occur to any rider, driver, groom, coach, trainer, attendant, animal or equipment at the show. It shall be a condition of entry that each exhibitor shall hold the Hunt Club, the Horse Show & Show Committee, its members, directors, employees, volunteers, contractors, sponsoring entities and the facility harmless for any loss or accident to horse, human or equipment, which may occur.
16. The Committee/Management reserves the right to cancel/combine, move or substitute classes at their discretion; to change any course; to change rings or judges; to add a mandatory (dotted) line; to change specifications in jumper classes in order to facilitate the time schedule or as competition warrants. Sections will be combined if entries warrant. Exhibitors must advise the in-gate of any conflicts. Under Saddle classes will not be held due to trainer conflict. The Rosato Oval is the priority ring. Please be ready for your class.

# DEERE SEASON



## Z320R Zero-Turn-Radius Mower

- 42" Accel Deep Deck
- 21 H.P. V-twin Engine K series
- 20" High Back Seat
- 3 Year 200 Hour Bumper to Bumper Warranty



## 1025R Sub Compact Utility Tractor

- 23.9 H.P. Diesel Engine
- 2 Range Automatic Transmission
- Available Factory Cab
- Available Quick-Tach Loader
- 72 Month 2000 Hour Powertrain Warranty



## X350 Lawn Tractor

- 42" Accel Deep Deck
- 21 H.P. V-twin Engine K series
- Automatic Transmission
- 4 Year 300 Hour Bumper to Bumper Warranty

221 Boot Road  
Downingtown, PA 19335  
**610-873-2001**

2555 Pottstown Pike  
Pottstown PA 19465  
**484-985-8021**



# Little's

141 E. Main Street  
Silverdale, PA 18962  
**215-257-5177**

335 S. York Road  
Hatboro, PA 19040  
**215-672-4100**

Rt. 29 and Little Rd.  
Zieglerville, PA 19402  
**610-287-9643**

[www.relittle.com](http://www.relittle.com)



17. Exhibitors are notified that any act of discourtesy or disobedience to the judges, officials or volunteers on the part of any owner, rider, trainer, coach, groom or family member may disqualify the horse, and the owner shall forfeit all entry and other fees.

18. Kimberton Hunt Club may use or assign photographs, videos, audios or other likeness of exhibitors and horses taken during the course of the competition for the ongoing promotion, coverage or benefit of the competition in 2023 or the future. All rights in connection with such use, including any claim to compensation, invasion of privacy, right of publicity, or to misappropriation are expressly and irrevocably waived.

19. Schooling: A Blue/Red Warm Up class replaces Hunter schooling in the show rings unless otherwise noted on the schedule. A Schooling round open to all is offered on the Derby Field. Hacking only in Ring 2 before the show. Jumpers do one course walk before the division. Schooling will be permitted only in areas provided by the committee.

20. All pets must be kept on a leash.

21. Sharps containers will be located at the show office.

22. How Many & Results – [Horseshowing.com](http://Horseshowing.com)

23. The Rosato Oval: 160' x 300' sand & wood fiber. Ring 2: 150' x 270' sand/stone dust. Ring 3: 160' x 250' sand/stone dust. Ring 3 warm up: 160' x 60'. Schooling Ring: 100' x 200' sand/stone dust. Lunging area 100' x 100' grass.

24. Stabling is not provided at this show.

## MEMBERSHIPS

Points can be earned with the following organizations at the Kimberton Hunt horse show. Please ensure your membership and/or your horse's membership/registration is current.

USHJA Outreach: [www.ushja.org](http://www.ushja.org)

PHSA Regional: [www.pennhsa.org](http://www.pennhsa.org)

Marshall & Sterling League (M&S): [www.HitsShows.com](http://www.HitsShows.com)

KHC is an AHS affiliate show: [www.associatedhorseshows.com](http://www.associatedhorseshows.com)



**REGISTER**  
**ONLINE**

# LUDWIG'S

— GRILL & OYSTER BAR —

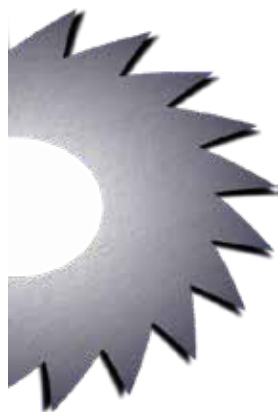
**1/2 PRICE RAW BAR  
EVERY FRIDAY  
4 - 6 PM**

**SCHEDULE YOUR NEXT EVENT AT LUDWIG'S**  
2904 CONESTOGA ROAD, GLENMOORE, PA  
610 - 458 - 5336  
[WWW.LUDWIGSOYSTERBAR.COM](http://WWW.LUDWIGSOYSTERBAR.COM)



**MENU**

## RIVIELLO SAWMILL



- CUSTOM CUT LUMBER
- LIVE EDGE WOOD SLABS
- SPECIALTY PALLETS
- FIREWOOD
- ANIMAL BEDDING  
(SHAVINGS)

1274 GEIGERTOWN ROAD    CELL: (484) 947-4160  
BIRDSBORO, PA 19508    [rivielloawmill@gmail.com](mailto:rivielloawmill@gmail.com)

# SENSENIQ'S FEED MILL

115 South Railroad Ave.  
New Holland, PA 17557  
Phone: (717) 354-4756  
1(800) 724-2002

[www.sensenigsfeed.com](http://www.sensenigsfeed.com)



*Offering a wide range  
of quality feed, grain  
& commodities for  
livestock, equine,  
small animal & wildlife.*

**THANK YOU TO RIVIELLO SAWMILL**

**2023 JUMPER RING SPONSOR**



# **MONTESANO BROS**

**TRATTORIA *and* CATERING**

**Italian Market • Dining Room • Bar/Taproom • Take Out  
Special Event Catering • Corporate Catering**

*Local and always fresh!*

Quality is our focus, we pride ourselves in using only the freshest local meats and produce. Pairing fresh ingredients with Italian imported olive oils and vinegars is our specialty.



## **HOURS**

**TUESDAY-THURSDAY | 11AM-7PM**

**FRIDAY & SATURDAY | 11AM-8PM**

**SUNDAY | 9AM-3PM (BREAKFAST 9-11AM)**

**CLOSED MONDAY**

**55 Seaboldt Way  
Chester Springs, PA 19425  
610-458-8065**



@montesanobrothers



@montesanobros

<https://themontesanobros.com/>

**VISIT OUR BEER GARDEN!**





## KIMBERTON HUNT CLUB

On behalf of the officers and members of the Kimberton Hunt Club, Inc., we invite you to inquire about hunting with us! Our goal is to promote fox chasing, riding, and all equestrian activities.

Kimberton Hunt Club was founded in 1870 and is one of the oldest private packs in the country. It is recognized by the Masters of Foxhounds Association. Our pack of Penn-Marydels is hunted under Huntsman Phil Shirk on Wednesdays and Saturdays. Mr. Sandy Dunn and his daughter, Ms. Barbara Mueller, are the joint Masters of Foxhounds.

The country hunted is primarily West Vincent Township, by the courtesy of the landowners whose hospitality makes it possible for the continuation of this traditional sport.

For more information please contact Mrs. Barbara Dunn, President, at [info@kimbertonhunt.org](mailto:info@kimbertonhunt.org) or visit our website

**[kimbertonhunt.org](http://kimbertonhunt.org)**

Kick on & thank you for your support!

*Come Hunt*  
*with KHC!*



**LEARN**  
**about**  
**FOX**  
**HUNTING**







A BELFOR  COMPANY

## 1-800 Water Damage of Delchester.

A Belfor company proudly serving Delaware and Chester Counties and the surrounding areas



### IICRC Certified Technicians

-  Water Damage
-  Smoke and Fire Damage
-  Mold and Antimicrobial Remediation

CALL US TODAY! **610-656-4329**

 1265 Ridge Rd. Pottstown, PA 19465





# Story Lane

## CONSTRUCTION

*Quality concrete construction,  
in a timely manner,  
at affordable prices.*



CONTACT

**Amos Blank**

**717-725-4404**

TO DISCUSS YOUR NEXT CONCRETE PROJECT

The KHC Hounds and their two-legged caretakers thank Amos for the INCREDIBLE construction of KHC's new Kennels - easy to clean, designed with high functionality and ease of use - two thumbs up for Amos!



## JUMPER SPECS

\*Jumper Prize Money is Guaranteed\*

### **KIMBERTON ITTY BITTY JUMPER .70m**

\$30

Sponsored by Stoned Goat Farm, Elverson

Class #3 II.1

Class #4 \$400 Stake II.2b (\$200, \$125, \$75)

\$40

### **KIMBERTON PRELIMINARY JUMPER .80m**

\$30

Class #5 II.1

Class #6 \$400 Stake II.2b (\$200, \$125, \$75)

\$40

### **KIMBERTON LOW CHILD/ADULT AM. JUMPER .90m**

\$30

Sponsored by Mill Pond Farm, Elverson

Class #7 II.1

Class #8 \$400 Stake II.2b (\$200, \$125, \$75)

\$40

### **\$1000 KIMBERTON OPEN GAMBLER'S CHOICE**

\$80

Sponsored by Silver Lining Farm, Birdsboro

Class #9

Open to all. Riders will have (45) minimum to (90) seconds maximum to jump as many obstacles, in any direction and in any order. (No combinations) Each obstacle can be jumped twice and carries from 10 points to 120 points according to its difficulty. No points will be awarded if there is a fault at the fence. The Joker is not part of the main course. After the fixed time has expired, the bell is rung to end the competitor's round. The competitor must cross the finishing line to have his time recorded, then has 20 seconds in which to attempt the Joker. Only one attempt at the Joker is allowed. 200 points are awarded if this obstacle is jumped correctly, but if it is knocked down 200 points must be deducted from the total points obtained by the competitor. See JP 150.1 for full class specs.

Fences .95m with the Joker fence 1.0m. (\$300 \$220 \$170 \$130 \$100 \$80)

### **KIMBERTON HIGH CH/AD JUMPER 1.10m**

\$30

Class #10 II.2c

### **\$1500 KIMBERTON 3-MAN TEAM CHALLENGE**

\$300 per team

1.05m - 1.10m

Class #11 II.2a

3 separate horse/rider combinations. Team jumping course faults are added & times are added together, team with the least faults wins. If needed, one team member from each team is chosen to jump off for tie breaker. \$1,500 split between team members.

### **\$800 KIMBERTON WELCOME STAKE 1.15m**

\$75

Sponsored by Riviello Sawmill, Birdsboro

Class #12

Open to all. II.2b (\$200 \$175 \$150 \$125 \$75 \$75)

### **\$7500 JUMPER CLASSIC MINI-PRIX 1.25m**

\$350

Sponsored by Silver Lining Farm, Birdsboro

Class #13

Open to horses and ponies that have competed in the Welcome Stake, which will determine Order of Go. Formal Attire required. II.2a (\$1875 \$1275 \$975 \$750 \$600 \$450 \$450 \$375 \$375 \$375)



## MARRON MAGNAWAVE, LLC

MagnaWave is non-invasive and delivers a pulsed electromagnetic frequency (PEMF) that works at the cellular level to help improve circulation, promote healing, and reduce inflammation and associated pain.

Get ready for show season (or recover from hunt season)!  
For your horse, your pets, and you!



Beneficial for:

- Muscle Pain/Soreness
- Arthritis/Joint Pain
- Hoof Abscesses
- Navicular Syndrome
- Tendon/Ligament Issues
- Urinary Incontinence
- More....

Donna Marron

*Certified MagnaWave Practitioner*

215-272-3258

[donna.marronmagnawave@gmail.com](mailto:donna.marronmagnawave@gmail.com)

[marronmagnawave.com](http://marronmagnawave.com), [@marronmagnawave](https://www.instagram.com/marronmagnawave)



# Attention:

This Prize List has  
**LIVE LINKS!**

Please click on the ads &  
underlined text to open  
supporting web content.



## details Horsehair Jewelry

Create a custom keepsake  
from your horse or pony's  
tail, or choose a stock item.

- bracelets for men & women
- earrings
- keychains
- necklaces

**NEW!**

- ornaments & suncatchers
- picture frames
- fly whisks

[www.detailshorsehairjewelry.com](http://www.detailshorsehairjewelry.com)



**\$1500 KIMBERTON JUNIOR HIGH JUMP CONTEST**

\$150

Sponsored by Shirk's Shoeing, Birdsboro

Class #14

Open to juniors on horses & ponies. See description below.

**\$1500 KIMBERTON OPEN HIGH JUMP CONTEST**

\$150

Sponsored by Shirk's Shoeing, Birdsboro

Class #15

Open to adults & professionals on horses & ponies. See description below.

**HIGH JUMP CONTESTS:** Must have entered 1 other class at this show. Conducted over one single obstacle, starting at approximately 2'9". Each competitor is allowed three attempts to clear each height. Three points are awarded for clearing a fence on the first attempt, two for the second attempt, and one on the third attempt. Points are cumulative from start to finish of class. Failure to clear a fence height on the third attempt results in elimination. See JP 150.3 for full class specs. (\$1250 \$900 \$350)

**JUMPER TABLES**

Table II.1 – Time First Round

Table II.2a - Time First Jump Off, all clean rounds to jump off after all first rounds are completed.

Table II.2b - Time First Jump Off, all clean rounds stay in the ring and jump off immediately.

Table II.2c - Power & Speed

**FENCE HEIGHT CONVERSION**

0.70m - 2'3"	0.95m - 3'1"	1.20m - 3'11"
0.75m - 2'5"	1.00m - 3'3"	1.25m - 4'1"
0.80m - 2'7"	1.05m - 3'5"	1.30m - 4'3"
0.85m - 2'9"	1.10m - 3'7"	1.35m - 4'5"
0.90m - 2'11"	1.15m - 3'9"	1.40m - 4'7"



**EQUITATION SPECS**

**LEAD LINE**

\$20 per class

Sponsored by Kiley and Hunter Mueller, Chester Springs

Open to riders 6 years and under. May be shown in English or Western tack. To be shown on the Derby Field.

Class #100 Lead Line – Walk

Class #101 Lead Line Walk/Trot

Class #102 Lead Line Advanced - May be asked to trot, demonstrate a jumping position and/or answer simple questions.

**BEGINNER RIDER**

\$25 per class

Sponsored by Mr. & Mrs. Edward Baird, Pottstown

Open to juniors & amateur adults in their first year of showing.

Class #70 Beginner Rider WT

Class #71 Beginner Rider WTC

Class #72 Beginner Rider 8 X-rails





# Adaptive Medical Clothing

**Kozie Clothes is committed to serving the unique need for stylish, fun and therapeutic clothing and products for the Pediatric Special Needs community.**

**Kozie has a wide range of sensory engineered and Medically designed products for children with special needs**

**Our Products are geared towards but not limited to:**

- Autism
- ADHD
- G-Tube Fed
- Medically Fragile
- Anxiety Disorder
- Downs Syndrome
- Apraxia
- Low Muscle Tone



399 Circle of Progress Drive, Pottstown, PA 19464

Tel: 484-624-5751 • [info@kozieclothes.com](mailto:info@kozieclothes.com) • [www.kozieclothes.com](http://www.kozieclothes.com)

**MINI-STIRRUP** \$25 per class

Open to children 8 years and under. Riders may cross enter other Walk, WT classes only.

Class #60 Mini-Stirrup Walk

Class #61 Mini-Stirrup WT Equitation

Class #62 Mini-Stirrup WT Pleasure

**SHORTEST STIRRUP EQUITATION** \$25 per class

Open to children 8 years and under. Riders may not cross enter into any other class or section at this show where they are required to canter.

Class #63 Shortest Stirrup EQ Walk

Class #64 Shortest Stirrup EQ WT

Class #65 Shortest Stirrup EQ Over 4 X-Rails (18") Cantering not required.

**SHORT STIRRUP EQUITATION** \$25 per class

Open to children 10 years and under. Judged on hands, seat, general appearance and control of mount.

Class #66 Short Stirrup EQ WT

Class #67 Short Stirrup EQ WTC

Class #68 Short Stirrup EQ Over 4 X-Rails (18")

Class #69 Short Stirrup EQ Over 8 X-Rails (18")

**OPEN EQUITATION** \$30 per class

Open to juniors & amateur adults. Judged on hands, seat & control of mount.

Class #36 Open Equitation WT

Class #37 Open Equitation WTC

Class #38 Open Equitation 2'6 O/F

**MEDAL CLASSES**

**MINI-MEDAL** \$25

Class #54

Open to riders competing in Short Stirrup & Pleasure Pony. A simple course of fences not to exceed 18'.

**M&S 2'6" CHILDREN'S MEDAL** \$40

Class #55

**M&S 2'6" ADULT MEDAL** \$40

Class #56

**M&S PONY MEDAL** \$40

Small/Medium 2' Large 2'6"

Class #58

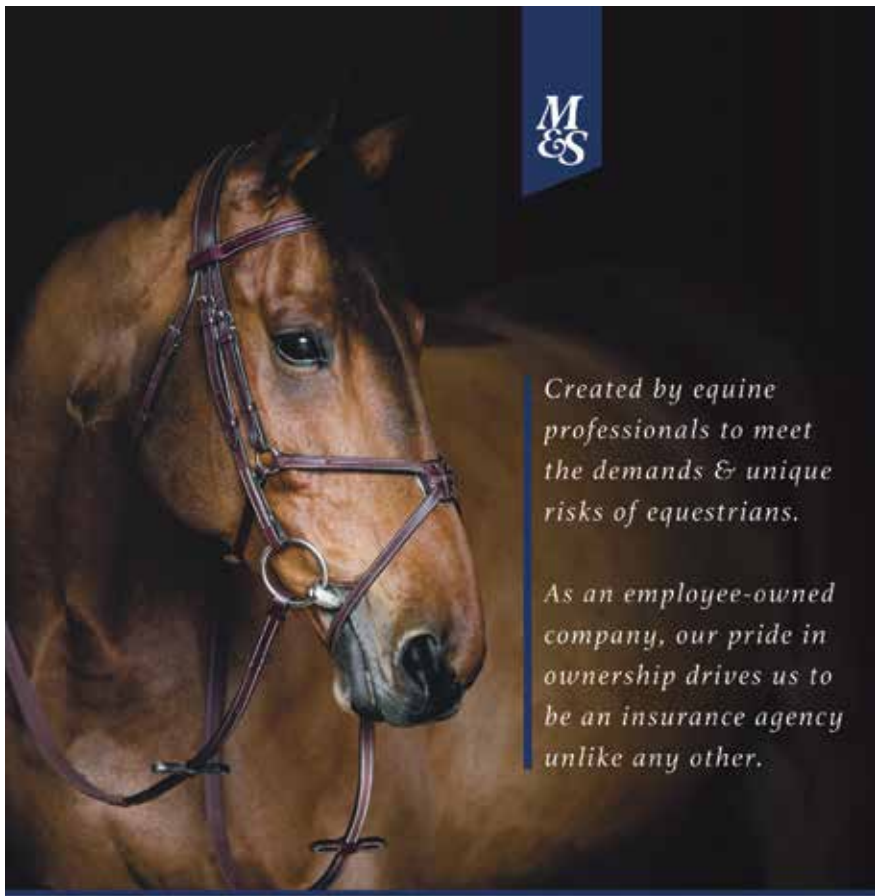
**PYRANHA™ CHILD HORSE MEDAL 3'** \$40

Class #52

**DOVER SADDLERY ADULT MEDAL 3'** \$40

Class #53





**M  
&  
S**

*Created by equine professionals to meet the demands & unique risks of equestrians.*

*As an employee-owned company, our pride in ownership drives us to be an insurance agency unlike any other.*

**Marshall  
& Sterling**  
INSURANCE  
EQUISPORT DIVISION

[www.MarshallSterling.com/Equisport](http://www.MarshallSterling.com/Equisport)

12798 West Forest Hill Blvd., Suite 102 Wellington, FL 33414 • Tel: 800-836-3046 • Fax: 561-557-5305

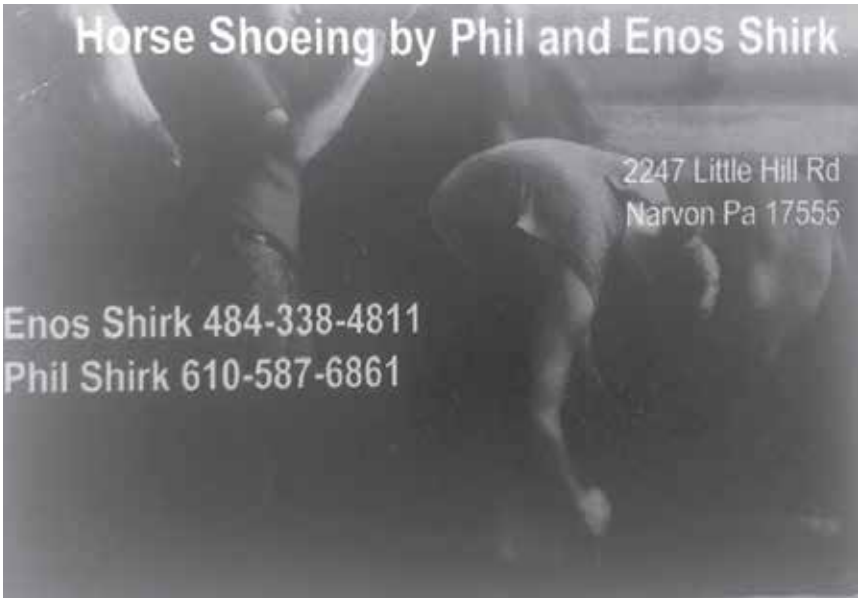


**RON'S**  
ORIGINAL BAR & GRILLE  
Est. 1990  
*Caring Real Food for the Health of It*

**MENU**

[www.ronsoriginal.com](http://www.ronsoriginal.com)  
610.594.9900

74 E Uwchlan Ave | Exton, PA 19341



**Horse Shoeing by Phil and Enos Shirk**

2247 Little Hill Rd  
Narvon Pa 17555

Enos Shirk 484-338-4811  
Phil Shirk 610-587-6861

*THANK YOU TO SHIRK'S SHOEING*

*2023 JUMPER RING SPONSOR*

*On-Site Farrier Service for Annual KHC Horse Show*

**IMPORTS/SALES/COACHING**



**PRISCILLA GODSOE**  
Nottingham- PA  
484-667-6187



## HUNTER -PLEASURE SPECS

### **BLUE/RED WARM UP**

\$20

Class #1 – Ring 2

Class #2 – Ring 3

Open card/Open to all to be run with the hunter section over fences. Blue Score 76 & above. Red Score 70 – 75. 1 trip only please.

### **YOUNG PONY HUNTER U/S \***

\$30

Class #24

### **YOUNG HUNTER U/S\***

\$30

Class #25

Five year olds and under suitable to become hunters. To be judged at a walk, trot and canter. Confirmation, 50%; performance, soundness, manners and way of going, 50%. Two or more entries than the number of ribbons awarded are to be stripped for confirmation.

### **JR/AM HANDLER**

\$25

Class #43

Horse or pony to be shown on the line by an Amateur or Junior. To be judged on presentation of the animal to the judge, neatness and appearance of the handler, and the overall condition of the animal. Conformation will not be a determining factor.

### **PLEASURE PONY**

\$25 per class

Kimberton Hunt Trophy - Donated by The Engraver

Open to all juniors and to be shown in English tack and judged with emphasis on manners and suitability. Fences not to exceed 2'0".

Class #73 Pleasure Pony WT

Class #74 Pleasure Pony WTC

Class #75 Pleasure Pony O/F

### **MODIFIED HUNTER 2'3"**

\$30 per class

Sponsored by Mr. & Mrs. Lee Calhoun, Birchrunville

Open to all.

Class #26 Modified Hunter O/F

Class #27 Modified Hunter O/F

Class #28 Modified Hunter O/F

Class #29 Modified Hunter U/S

### **BABY GREEN HUNTER**

\$30 per class

Sponsored by Kate Stanton, Birchrunville

Myron Wildrick Challenge Trophy - Donated by Sandra K. Byrne

Open to all horses and ponies in their 1st or 2nd year of showing over fences. Trotting of corners not to be penalized. Fences 2'3" - 2'6".

Class #20 Baby Green O/F

Class #21 Baby Green O/F

Class #22 Baby Green O/F

Class #23 Baby Green U/S





Masonry, Hardscaping,  
Landscaping, and Fencing.

**FULL STOCK  
OF MULCH:  
SCHEDULE  
DELIVERY  
OR PICK UP**



We offer a wide range of Masonry, Hardscaping, Landscaping, and Fencing Products

Brick  
Building Materials  
Bulk Materials  
Flagstone

Hardscape Materials  
Landscape Supplies  
Masonry Supplies  
Natural Stone  
Seasonal Materials

On-Site Displays  
On-Site Fabrications  
Treads & Sills  
Veneers

Stony Run Supply is open to contractors & homeowners

291 Stony Run Rd. Spring City, PA  
Phone: (610) 792-5500  
sales@stonyrunsupply.com

**[STONYRUNSUPPLY.COM](http://STONYRUNSUPPLY.COM)**

Mon. – Fri., 6:3 am to 4pm  
Sat., 7am – 12pm

**THOROUGHBRED HUNTER**

\$30 per class

Sponsored by Bob &amp; Pam Landis, Chester Springs

Open to horses registered with The Jockey Club. Fences 2'3 - 2'6.

Class #30 TB Hunter O/F

Class #31 TB Hunter O/F

Class #32 TB Hunter U/S

**PLEASURE HORSE**

\$30 per class

Sponsored by Gigi Fitzgerald, Parkesburg

Open to all horses to be shown in English tack and judged with emphasis on manners and suitability. Fences 2'6".

Class #33 Pleasure Horse WT

Class #34 Pleasure Horse WTC

Class #35 Pleasure Horse O/F

**LOW CHILDREN'S HUNTER PONY**

\$30 per class

Sponsored by Mane Line Stables, Elverson

Open to juniors on ponies. Riders may not cross enter into Children's Hunter or any class where fences exceed 2'9". (Exception: 3'0" Equitation)

Fences 2"

Class #76 Low Children's Hunter Pony O/F

Class #77 Low Children's Hunter Pony O/F

Class #78 \$100 Low Children's Hunter Pony Stake (\$50, \$30, \$10, \$10)

Class #79 Low Children's Hunter Pony U/S

**LOW CHILDREN'S HUNTER HORSE**

\$30 per class

Sponsored by Betty Jane Dunn, Gladwyne

Open to juniors on horses. Rider may not cross enter into Children's Hunter or any class where fences exceed 2'9". (Exception: 3'0" Equitation)

Fences 2'6"

Class #89 Low Children's Hunter Horse O/F

Class #90 Low Children's Hunter Horse O/F

Class #91 \$100 Low Children's Hunter Horse Stake (\$50, \$30, \$10, \$10)

Class #92 Low Children's Hunter Horse U/S

**LOW ADULT AMATEUR HUNTER**

\$30 per class

Sponsored by Mr. &amp; Mrs. Pearson W. Delaney, Wayne

Open to amateur adults. Riders may not cross enter into any class or section where fences exceed 2'9". (Exception: 3'0" Equitation)

Fences 2'6"

Class #93 Low Adult Am. Hunter O/F

Class #94 Low Adult Am. Hunter O/F

Class #95 \$100 Low Adult Am. Hunter Stake (\$50, \$30, \$10, \$10)

Class #96 Low Adult Am. Hunter U/S



*Congrats to Kimberton Hunt* for over 150 years in the Chester Springs community and to the exhibitors in this year's horse show!



THANK YOU TO BELOVED SUPPORTERS OF THE KIMBERTON HUNT CLUB -  
*Dr. & Mrs. Donald Rosato of St. Matthew's Place, Chester Springs*  
FOR THEIR GRACIOUS DONATIONS TO THE 78TH ANNUAL KHC HORSE SHOW.

**WE AGREE -**  
*GOOD ENOUGH*  
**WON'T GET**  
**YOU THE WIN.**

From your trailer ladder to the beams supporting the indoor arena,

**PELET**

WELDING & STEEL FABRICATORS

is one of the highest accredited steel fabricators in the area.

Family-owned and operated since 1954, our team can fabricate your next project from design through delivery.

LET'S GET STARTED

610.384.5084

[PeletWelding.com](http://PeletWelding.com)



**PONY MODEL**

\$25

Class #80

Pony to be shown on the line by a Junior. To be judged on presentation of the animal to the judge, neatness and appearance of the handler, and the overall condition of the animal. Conformation will not be a determining factor. Points not to count toward the division.

**CHILDREN'S HUNTER PONY SMALL/MEDIUM**

\$30 per class

Sponsored by Barb &amp; Merrill Walters, Pottstown

Fences 2'

Class #81 Children's Hunter Pony S/M O/F

Class #82 Children's Hunter Pony S/M O/F

Class #83 Children's Hunter Pony S/M \$100 Stake (\$50, 30, 10, 10)

Class #84 Children's Hunter Pony S/M U/S

**CHILDREN'S HUNTER PONY LARGE**

\$30 per class

Sponsored by Mr. &amp; Mrs. Scott Quillman, Chester Springs

Fences 2'6"

Class #85 Children's Hunter Pony L O/F

Class #86 Children's Hunter Pony L O/F

Class #87 Children's Hunter Pony L \$100 Stake (\$50, 30, 10, 10)

Class #88 Children's Hunter Pony L U/S

**LOW HUNTER**

\$30 per class

Sponsored by Hetherbridge Farm, in Memory of Dress Gray

Open to all horses. Fences 2'9".

Class #40 Low Hunter O/F

Class #41 Low Hunter O/F

Class #42 Low Hunter U/S

**CHILDREN'S HUNTER HORSE**

\$30 per class

Sponsored by Dr. &amp; Mrs. Donald Rosato, Chester Springs

Rick's Heritage Saddlery Trophy

Fences 3'0"

Class #44 Children's Hunter Horse O/F

Class #45 Children's Hunter Horse O/F

Class #46 Children's Hunter Horse \$100 Stake (\$50 \$30 \$10 \$10)

Class #47 Children's Hunter Horse U/S

**ADULT AMATEUR HUNTER**

\$30 per class

Sponsored by Mrs. Donna Marron / Marron Magnawave, Harleysville

Fences 3'0"

Class #48 Adult Amateur Hunter O/F

Class #49 Adult Amateur Hunter O/F

Class #50 Adult Amateur Hunter \$100 Stake (\$50 \$30 \$10 \$10)

Class #51 Adult Amateur Hunter U/S

**Attention:**

This Prize List has  
**LIVE LINKS!**

Please click on the ads &  
underlined text to open  
supporting web content.





**Livestock and Poultry Feeds**

**Gehman  
Horse  
Feeds**



**Pet Feed  
Winner Dog Ration**

44 North 3<sup>rd</sup> Street, Denver, PA 17517  
**717-336-5585**

**\$5.00 OFF**  
**a bag of Horse Food**  
**with this coupon**  
(Limit 2) Expires 6/30/2023



**SWIATEK ORTHODONTICS**

**Matthew Swiatek, DMD, MMSc**

Harvard Dental School Graduate

info@swiatekortho.com

LEAVE US A REVIEW



**CHESTER SPRINGS**  
153 Little Conestoga Road  
Chester Springs, PA 19425  
610.458.1600



**GLEN MILLS**  
331 Wilmington W. Chester Pike • Suite 5  
Glen Mills, PA 19342  
610.358.0600

SWIATEKORTHO.COM



*Grass*  
**MANAGEMENT INC.**  
*"Turf You Can Play On"*

- \* Mowing Services
- \* Soil Balancing Program
- \* Aeration
- \* Seeding
- \* Renovation
- \* Landscape Design, Installation & Maintenance

**SPECIALIZING IN EQUESTRIAN PROPERTIES**

Grass Management, Inc. is a full service company that can help you from beginning to end. For more information and pricing, contact us by:

Phone: 610-436-5055

E-Mail: [grassmanagementinc@gmail.com](mailto:grassmanagementinc@gmail.com)

Or, visit us on the web at:

[www.grassmanagementinc.com](http://www.grassmanagementinc.com)



## DERBY FIELD SPECS

### DERBY FIELD SCHOOLING ROUND

\$20 per round

Class #103 - Derby Field

Open to all. Open card to be run with the current fence height. One round permitted for horses/ponies competing in the 2' or 2'6" Hunter Derby. Up to three rounds permitted for horses/ponies NOT competing in a Hunter Derby.

### FOX HUNTER

\$30 per class

Sponsored by the Dunn & Mueller Families, Chester Springs

Open to all horses & ponies that have hunted this past season. Need not be MFHA. Formal or Ratcatcher attire. Proper hunt appointments encouraged. To be held on the grass in the Derby Field. Fences 2'6".

Class #106 Fox Hunter O/F

Class #107 \$250 Fox Hunter Handy (\$125, 75, 25, 25)

Class #108 Fox Hunter U/S

### \$500 HUNTER TEAM CHALLENGE

\$45 per horse

Sponsored by Barbara & Sandy Dunn MFH, Chester Springs

Class #105

Fences 2' and 2'6". Open to all riders, but no team may include more than one professional rider. A rider with two horses may compete on two teams, but no horse may compete on more than one team. One rider from each team will jump a conventional hunter course, Course A, and the other rider will jump a handy hunter course, Course B. Please declare in the show office which course & height you are riding when picking up your number. Each horse will receive a numerical score and the two scores added together will determine the final score for the pair. The pair with the highest score will be the class winner and the successive scores will be placed accordingly in descending order. (\$100 \$90 \$80 \$80 \$75 \$75)

### \$500 FENCEWORKS 2' HUNTER DERBY

\$45

Class #104

(\$150 \$110 \$65 \$40 \$30 \$25 \$20 \$15 \$15 \$10 \$10 \$10)



### \$1000 BEAVER HILL FARM 2'6 HUNTER DERBY

\$90

Class #109

(\$300 \$220 \$130 \$80 \$60 \$50 \$40 \$30 \$30 \$20 \$20 \$20)



**Hunter Derby - Hunt n' Go Format:** Open to juniors & amateur adults on horses & ponies. This format consists of two phases, jumped consecutively. Competitors will jump the first phase as a Classic Hunter round with a high option(s). Stay in, pick up their pace and pass through a set of markers to begin their Handy Hunter round, consisting of 5 – 8 fences with a high option(s); with pace, brilliance and a shorter track to be rewarded. 12 entries to fill, or it becomes a sweepstakes. Formal attire not required.

Awards & Champion Keepers courtesy of **KHC &**

**Chester County Equine Events LLC**, unless otherwise noted.



## SPECIAL AWARDS

- Grand Short Stirrup Champion - The Arthur D. McGinnis Memorial Trophy  
Awarded to the rider accumulating the most points in Shortest Stirrup, Short Stirrup & Mini-Medal
- Best Child Rider on a Pony • sponsored by Ms. Rebekah Robinson • as decided by the Judge in Ring 3
- Best Child Rider on a Horse • sponsored by [deTails Horsehair Jewelry](#) • as decided by the Judge in Ring 2
- Hunter Pony Style Award • sponsored by [Blue Diamond Equestrian Center](#) • as decided by the Judge in Ring 3
- Hunter Horse Style Award • sponsored by Dark Horse Farm / the Murray Family • as decided by the Judge in Ring 2
- Jumper Style Award • sponsored by Ms. Wilhelmina Horzepa / [A&E Show Stables](#) • as decided by the Judge in Ring 21
- Best Turned Out Horse & Rider • sponsored by Ms. Melissa Gartland • as decided by the Judge in the Derby Field



# **2023 Friends of Kimberton Hunt**

## **First Flight Plus**

*Mr & Mrs Taylor K. Miller*

## **First Flight**

*Donna Marron / Marron MagnaWave*

*Rachel Wilkoski / Rachel's Riding Closet*

*Donna Rubin*

*Bruce Kauffman*

## **Second Flight**

*A Neighbor on Westover Lane*

*James A. Cochran, Inc*

*Fred Hagendorf*

*Pamela Shupp*

## **Hilltopper**

*The Silverwoods*

*Gloria Templin*

*Patrick Boyle*



# Thank You

The Kimberton Hunt Club would like to extend our heartfelt appreciation to an Anonymous Donor at our 78th annual show, who believes in the tradition of equestrian sport.

Many individuals, families & businesses contribute to the success of the show, and we could not do it without your support!

However, this specific individual allocates prize money each year, to provide the best awards for our competitors. This ensures a fabulous competition and carries on the tradition of our annual show.



# PUGHTOWN AGWAY FARM, LAWN & GARDEN CENTER

Pine Shavings • Pelleted Bedding • Hay • Straw  
Small Animal Feeds • Grooming & Medical Supplies  
Grazing Muzzles • Wormers • Supplements • Treats  
Large Selection of Organic Feeds & Lawn Care Products  
Sweet PDZ • Durafork • Forever Forks • Stall Mats  
Farm Supplies • Propane • And Much More

*Delivery Available*

*VISIT OUR BEAUTIFUL GARDEN CENTER*

*Shrubs • Trees • Flowers • Pottery • Statuary*

*Now Open Sundays 10 AM – 3 PM*

819 Pughtown Road & Route 100  
Spring City, PA 19475

*(located one mile south of Rt. 23 on Rt. 100)*

Feed Store                      610.469.9238  
Garden Center                610.469.6688

*Place Your Orders on our Website*

*Your country farm, lawn & garden center...*



LEGENDS™



CRYPTO AERO  
WHOLEFOOD HORSE FEED



PROELITE



TRIPLE  
CROWN  
NUTRITION, LLC

Mary E. Musheno, PT, DPT, CSCS\*D, TPPT, CKTP, LVSTB&G

Clinic Director  
Graston Certified



direct 610-857-6099  
fax 610-857-1816

email [mary.musheno@ATIpt.com](mailto:mary.musheno@ATIpt.com)

416 COMMONS DRIVE • PARKESBURG, PA 19365



KEARNEY HILLARD

ph: 610-656-2757

custom hunt whips & crops handmade in Chester County



## MASSAGE & MAGNAWAVE FOR HORSES & EQUESTRIANS

Cell: 610-960-1256

[DarleneLatshaw@Yahoo.com](mailto:DarleneLatshaw@Yahoo.com)

Wise Old Horsemen



Lumber • Building Materials • Hardware

101 E. Main Street  
Elverson, PA 19520  
Ph: 610-286-5021

Mon-Fri 7am-5pm  
Saturday 7am-3pm  
[elversonsupply.net](http://elversonsupply.net)

John and Deborah Hausladen  
Members of Kimberton Hunt

The Co Founders of a 501c3 Organization:



Sneakers for  
**SOLDIERS**

"Supporting our troops where they  
need it most...their feet."

[www.sneakersforsoldiers.org](http://www.sneakersforsoldiers.org)

New & Used Saddles  
Saddle & Tack Repair  
Pleasure & Show  
Harnesses

FASTRACK™  
Equine Supplement

Mon -Fri 8-5  
Sat 8-4  
2368 Main Street, Narvon, PA

Aaron Martin  
Ph: 610-286-4800  
[www.JRsHarnessSaddle.com](http://www.JRsHarnessSaddle.com)





Thank You to the following  
Supporters of the 2023 KHC Horse Show

### GRAND CHAMPION SPONSORS

Anonymous  
Barbara & Sandy Dunn, MFH  
Pickering Valley Feed & Farm Store  
Dr & Mrs Donald J Rosato / St. Matthew's Place

### BLUE RIBBON SPONSORS

Chester County Equine Events  
Fenceworks Inc  
Sensenig's Feed Mill Inc

### SHOW SPONSORS & DONORS

*(listed alphabetically)*

A&H Harness  
Agway - Pughtown  
Alliance Equine Health  
Antique Horsology  
Barbara & Merrill Walters  
Beaver Hill Farm  
Betty Jane Dunn  
Blue Diamond Equestrian Center  
Bob & Pam Landis / Yellow Springs Farm  
Bruce Kaffman  
Carl Wingard, Inc.  
CR Cremations  
Darlene Latshaw, LMT  
Dark Horse Farm / Murray Family  
Delaney Grandchildren  
Donna Marron / Marron Magnawave  
Donna Rubin  
Dr. Mary Musheno, ATI Physical Therapy  
Dunn & Mueller Families  
Eastern Shore Fencing  
Elverson Supply  
Equine Exchange  
Gehman Feed Mill  
Gigi Fitzgerald  
Gloria Templin  
Grass Management, Inc.  
Hallmark Equine Insurance  
Hare, Chase & Heckman  
Hellzapoppin' Farm  
Hetherbridge Farm, in Memory of Dress Gray  
Honeybrook Golf Club  
James A. Cochrane, Inc.  
JR's Harness & Saddle  
Kathryn Stanton

Kearney Hillard- Custom Whips & Handles  
Kiley & Hunter Mueller  
King Construction Co., LLC  
Kozie Clothes  
Ludwig's Grille & Oyster Bar  
Mane Line Stables  
Metropolitan Communications  
Mill Pond Farm  
Montesano Brothers Italian Market & Catering  
Mr. & Mrs. Edward Baird  
Mr. & Mrs. Lee Calhoon  
Mr. & Mrs. Pearson W. Delaney  
Mr. & Mrs. Scott Quillman  
Mr. Fred Hagendorf  
Mr. & Mrs. Taylor K. Miller  
Neighbor on Westover Lane  
Pam Landis, CPA & USEF Judge  
Pamela Shupp  
Patrick Boyle  
Pelet Welding  
Pennsylvania Horse Shows Association  
Rachel's Riding Closet / Rachel Wilkoski  
Riviello Sawmill  
Robert E. Little, Inc.  
Ron's Original Bar & Grille  
Shirk Farrier Services  
Silver Lining Farm  
Stillmeadow Equine  
Stony Lane Construction - Concrete  
Stony Run Supply - Hardscaping  
Stoned Goat Farm  
Swiatek Orthodontics  
Tack In A Box, Inc  
The BAMR Co. - Belfor Water Damage  
The Covert Farm - Pricilla Godsoe  
The Silverwood Family  
Unionville Equine Associates

### BANNER SPONSORS

Malvern Bank  
Cellarium Wine Cellars  
Horizon Farm Credit  
Sanatoga Water Conditioning

### RIBBONS SPONSORS

Karen DiLello  
John Malkowski  
Mr. & Mrs. Kenneth Silverwood

(CONTINUED ON NEXT PAGE)

our supporters!  
  
we



# Thank You



Hunter Prize Money generously donated by  
Barbara & Sandy Dunn MFH, Kimberton Hunt.  
Chester Springs, PA

*Best of Luck  
to our Exhibitors!*



Vintage Equestrian Themed Collectables  
[antiquehorsology.org](http://antiquehorsology.org)



### RIDER BACK NUMBERS

deTails Horsehair Jewelry

### JUMP SPONSORS

Beaver Hill Farm  
Pennsylvania Horse Shows Association  
Kozie Clothes  
Hare, Chase & Heckman Insurance  
Fenceworks, Inc.

### SPECIAL AWARDS

Ms. Melissa Gartland  
Wilhelmina Horzepa / A&E Show Stables  
Blue Diamond Equestrian Center  
Dark Horse Farm / Murray Family  
deTails Horsehair Jewelry  
Ms. Rebekah Robinson

### Mane Line Stables

Elverson, PA

ENGLISH & WESTERN  
FOALING SERVICES  
LESSONS & CAMP  
...and MORE!





# **Metropolitan**

---

# **Communications, Inc.**

---

Crafting, installing, and maintaining custom wireless communications solutions to both the Commercial Business and Public Safety Communities for over 60 years.

- System Design
- System Implementation
- After-Market Maintenance
- Two-Way Radio Communications
- Bi-Directional Amplification Systems
- Ruggedized Computing
- Wireless Data Systems and Broadband
- Paging
- Telephony
- Emergency Vehicle Lighting and more

**309 Commerce Drive  
Suite 100  
Exton, PA 19341  
(800) 762-4349  
[www.mcsrado.com](http://www.mcsrado.com)**



Dr. Tyra Crowley, VMD  
Dr. Annika Frederickson, DVM  
Dr. Lauren Klutchka, VMD

ph: 610-686-6006  
StillmeadowEquine@gmail.com  
www.stillmeadowequine.com  
153 Gable Rd, Coatesville, PA 19320



Dr. Maria Wright, DVM  
Dr. Julia Miller, VMD

ph: 610-942-9866  
vets@allianceequinehealth.com  
www.allianceequinehealth.com  
570 Fairview Rd, Glenmoore PA 19343



## ***Attention:***

This Prize List has  
**LIVE LINKS!**

Please click on the ads &  
underlined text to open  
supporting web content.



**HONEYBROOK**  
G O L F C L U B

**1422 Cambridge Rd.  
Honey Brook, PA  
www.honeybrookgolf.com  
610-273-0207**





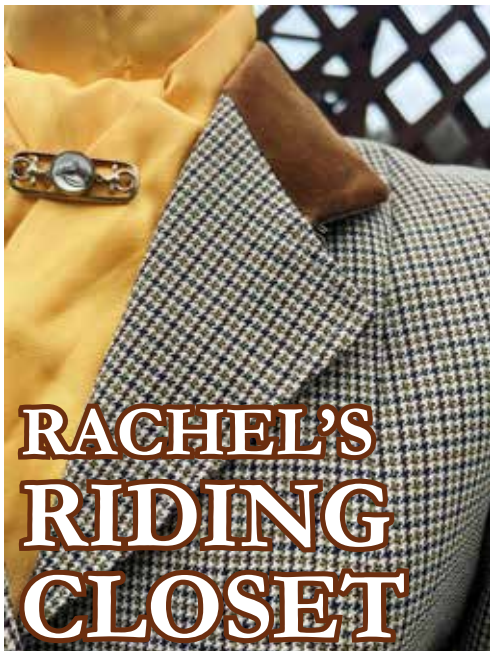
# KING



## SETTING THE STANDARD SINCE 1978

Complete design services and fine craftsmanship  
Custom barns, arenas, garages and living quarters

1-888-354-4740 | [www.kingbarns.com](http://www.kingbarns.com)



### RACHEL'S RIDING CLOSET

[shop online](#) ●●●●

Owner: Diana Shirk  
484-955-9413  
[silverliningfarm28@gmail.com](mailto:silverliningfarm28@gmail.com)



Services:  
Lessons  
Boarding  
Training  
Hunter/Jumpers  
Fox Hunting

THANK YOU **SILVER LINING FARM**

2023 JUMPER RING SPONSOR



# EASTERN SHORE



FENCING, LLC

Equestrian Fencing  
Run-In Sheds  
Cross Country Jumps

[easternshorefencing.com](http://easternshorefencing.com)  
[easternshorefencing24@gmail.com](mailto:easternshorefencing24@gmail.com)

484-661-3057





# BE A PART OF THE FUN!



EQUIMEDCLICKS PHOTOGRAPHY

## HUNTER

Hunter Walk Trot Poles  
Hunters 18" or X-rail  
Hunters 2'  
Hunters 2'3"  
Hunters 2'6"  
Hunter Derby

## EQUITATION

Walk Trot Equitation  
Walk Trot Canter Equitation  
Equitation 18" or X-rail  
Equitation 2'  
Equitation 2'3"  
Equitation 2'6"

## JUMPER

Jumper .75-.80m  
Jumper .85m  
Jumper .90-95m  
Jumper 1.0-1.05m

**HOST LOCATION:**  
**Princeton Classic Finale**  
**August 2-6, 2023**  
**Princeton Show Jumping**  
**Princeton, NJ**

### How to Qualify for the Outreach Festival:

- Riders must be a USHJA member at the free Outreach level (or higher) within one week of competing in an Outreach Series competition. Rider may complete an application at the show or join online via the USHJA website and have a seven day window to become a member.
- Must have competed in at least one Outreach Series Competition
- Horses do not need to be registered or microchipped in order to participate. Those wishing to have their horses earn Outreach points must record them with USHJA (\$20/annual or \$75/lifetime)

### Zone 2 Outreach Series Competitions:

**Autumn Riders** - E Freehold, NJ  
**Black River** - Ringoes, NJ  
**Brass Ring** - Elverson, PA  
**CJL Inc** - NJ and PA locations  
**DDR Farm** - Melville, NY  
**Hidden Pond Stables** - Manorville, NY

**Hudson Valley Horse Shows** - all locations  
**In & Out Jumper Series** - Dover, DE  
**Kimberton Hunt** - Glenmoore, PA  
**Long Island Horse Shows** - Setauket, NY  
**Lotus Show Stables** - Long Valley, NJ  
**Making Strides Series** - Church Hill, MD

**Princeton Show Jumping** - Princeton, NJ  
**Smoke Rise Riding Club** - Kinnelon, NJ  
**Sussex Co. Benefit** - Augusta, NJ  
**Swan Lake** - Littlestown, PA  
**Winding Hills Stables** - Northport, NY

Join the fun at [ushja.org/outreach/](https://ushja.org/outreach/)  
**Memberships are free!**



# CR CREMATIONS

*Horse & Pet Cremation... A Caring Alternative*

## Selway Farms

690 Strasburg Road

Paradise, PA 17562

717-314-4756

[www.crcremations.com](http://www.crcremations.com)

*Credit Cards Accepted*



UNIONVILLE  
EQUINE  
ASSOCIATES, P.C.

COMPREHENSIVE VETERINARY CARE

25 Webster Lane, Oxford, PA 19363  
p 610-932-6800 • f 610-932-6801  
[ueavet.com](http://ueavet.com) • [info@ueavet.com](mailto:info@ueavet.com)

**Explore UEA's Comprehensive Services**



USEF Judge  
"R" H, HE, J, HB

*Pamela J. Landis*

Equine Services, Showing, Sales

Cell: 610-329-9637

Email: [pamelalandiscpa@gmail.com](mailto:pamelalandiscpa@gmail.com)

1645 SW Thornberry Circle Palm City, FL 34990

**BEST OF LUCK**  
to the Exhibitors  
at the  
**78th Annual**  
**Kimberton Hunt Show**

*Bob & Pam Landis*  
*Yellow Springs Farm*

Tax & Accounting Services  
Consulting Services  
PA & FL Certified

**PAMELA J. LANDIS, CPA**

1645 SW Thornberry Circle

Cell: 610-329-9637

Palm City, FL 34990

Email:  
[pamelalandiscpa@gmail.com](mailto:pamelalandiscpa@gmail.com)

*Melvin Dutton*  
*Breaking Pointe Stables*  
*1346 Village Lane*  
*Chester Springs*  
*610.470.5944*



Reliable Protection. **Expect It.**

Mortality • Liability • Farm

Let our experienced, knowledgeable staff find the right insurance product for you.

 **Hallmark**  
Equine Insurance Agency  
**800.734.0598**  
www.hallmarkhorse.com



**Attention:**

This Prize List has **LIVE LINKS!**

Please click on the ads & underlined text to open supporting web content.

  
**HELLZAPOPPIN FARM**  
BOARDING • TRAINING • LESSONS  
*In The Heart of Hunt Country*

**SIGN UP FOR  
SUMMER  
CAMP**

**Good Luck to the Exhibitors!**

from the

**The Delaney Grandchildren**



*Katie, Brent, Hayden, Lainey, Cade, Norah & Keira*



ELVERSON, PA  
610 - 286 - 5300

**CARL WINGARD INC**  
WWW.CARLWINGARDINC.COM

CARDTROL PUMPS  
FUEL OILS - GASOLINE

Custom-made  
pleasure and  
show harness



In the Village of Churchtown  
2178 Main Street  
Narvon, PA 17555



**Harness and Tack Co.**  
Saddle & Tack Repair  
Ph. 717-445-4050

New & Used  
Saddles

Hours:  
M-F 8:00-5:00  
Sat 8:00-3:00



info@ahharness.com  
www.ahharness.com  
Owner: Harry Martin





# The Marshall & Sterling Insurance League National Finals, and the Midwest Regional Marshall & Sterling Insurance League Finals!

## WHAT DIVISIONS COUNT?

Finals competition will be offered in the following divisions:

### HUNTERS

- Children's Hunter Horse
- Children's Hunter Pony
- SmartPak™ Adult Hunter Classic
- MOVEX™ Hunter
- Bit O' Straw Hunter Classic
- HITS 2'6" Hunter
- HITS 2' Hunter
- HITS Novice Child Hunter Classic
- HITS Novice Adult Hunter Classic

### JUMPERS

- Children's Jumper
- Adult Jumper
- HITS Modified Child/Adult Jumper Classic
- HITS Low Child/Adult Jumper Classic

### EQUITATION

- M&S Junior Medal
- Dover Saddlery™ Adult Medal
- Pyranha™ Children's Horse Medal
- M&S Children's Pony Medal
- M&S 2'6" Adult Medal
- M&S 2'6" Children's Medal
- M&S Junior/Amateur Horsemanship Medal

## WHAT HORSE SHOWS COUNT?

Over 1,300 horse shows across the country are member events of the Marshall & Sterling Insurance League. A complete list of shows is available on our website - HitsShows.com

## WHAT IS THE QUALIFYING PERIOD?

The qualifying period for 2022 is Aug. 30, 2021 to Aug. 28, 2022.

## WHERE ARE THE FINALS IN 2022?

### THE NATIONAL FINALS

HITS-on-the-Hudson, Saugerties, NY | Sept. 14-18, 2022

### MIDWEST REGIONAL FINALS

Lamplight Fall Classic I  
HITS Lamplight Equestrian Center, Wayne, IL | Sept. 14-18, 2022

### INDOOR FINALS

Great New York State Fair Expo Center  
Syracuse, NY | October 26-30, 2022

## DO I NEED TO BE A MEMBER?

Riders must be members of the Marshall & Sterling Insurance League in order for points to count. Only the Rider need join. There is just one membership no matter how many horses you show!

For more information, please call League Representative, Patti Guerriero at 845.246.8833 or visit our website at HitsShows.com.



## 2022 Membership Application

Note: Riders must be members for points to count toward the Finals.

PLEASE PRINT LEGIBLY AND BE SURE TO INCLUDE ALL THE INFORMATION REQUESTED.



Name \_\_\_\_\_

Birth date \_\_\_\_/\_\_\_\_/\_\_\_\_ (Required for Junior & Amateur Applicants)  
Month Day Year

Address \_\_\_\_\_

Home Phone \_\_\_\_\_

Address \_\_\_\_\_

Cell Phone \_\_\_\_\_

City/State/Zip \_\_\_\_\_

E-mail \_\_\_\_\_

Status (please check one):  Junior  Amateur  Professional

Trainer Name \_\_\_\_\_

Signature \_\_\_\_\_ Date \_\_\_\_\_

Trainer E-mail \_\_\_\_\_

Membership Fee: \$40

Checks payable and mailed to: Marshall & Sterling Insurance League, 319 Main Street, Saugerties, NY 12477-1330





# CLASS SCHEDULE

## The Rosato Oval – 8 AM start

(Course walk only)

- #3 Kimberton Itty Bitty Jumper .70m II.1
- #4 Kimberton \$400 Itty Bitty Jumper Stake .70m II.2b
- #5 Kimberton Preliminary Jumper .80m II.1
- #6 Kimberton \$400 Preliminary Jumper Stake .80m II.2b
- #7 Kimberton Low Ch/Ad Amateur Jumper .90m I
- #8 Kimberton \$400 Low Ch/Ad Amateur Jumper Stake .90m II.2b
- #9 \$1000 Kimberton Open Gambler's Choice .95m
- #10 Kimberton High Child/Adult Jumper 1.10m II.2c
- #11 \$1500 Kimberton 3-Man Team Challenge 1.05-1.10 II.1
- #12 \$800 Kimberton Welcome Jumper Stake 1.15m II.2b
- #13 \$7500 Kimberton Jumper Classic Mini-Prix 1.25 II.2a
- #14 \$1,500 Kimberton Junior High Jump Contest
- #15 \$1,500 Kimberton Open High Jump Contest



**QUESTIONS?**  
 Email the Show Office  
 or visit  
[horseshowing.com](http://horseshowing.com)

## DIRECTIONS TO SHOW

### LUDWIG'S CORNER SHOW GROUNDS

5 Nantmeal Road

Glenmoore, PA 19343

### Nearest Emergency Room

PHOENIXVILLE HOSPITAL (11 miles)

140 Nutt Road, Phoenixville

### Nearest Level 1 Trauma Center/Emergency Room

PAOLI HOSPITAL (13 Miles)

255 West Lancaster Ave. Paoli

484.565.1000

## Ring 2 – 8 AM start

(Hacking only before the show)

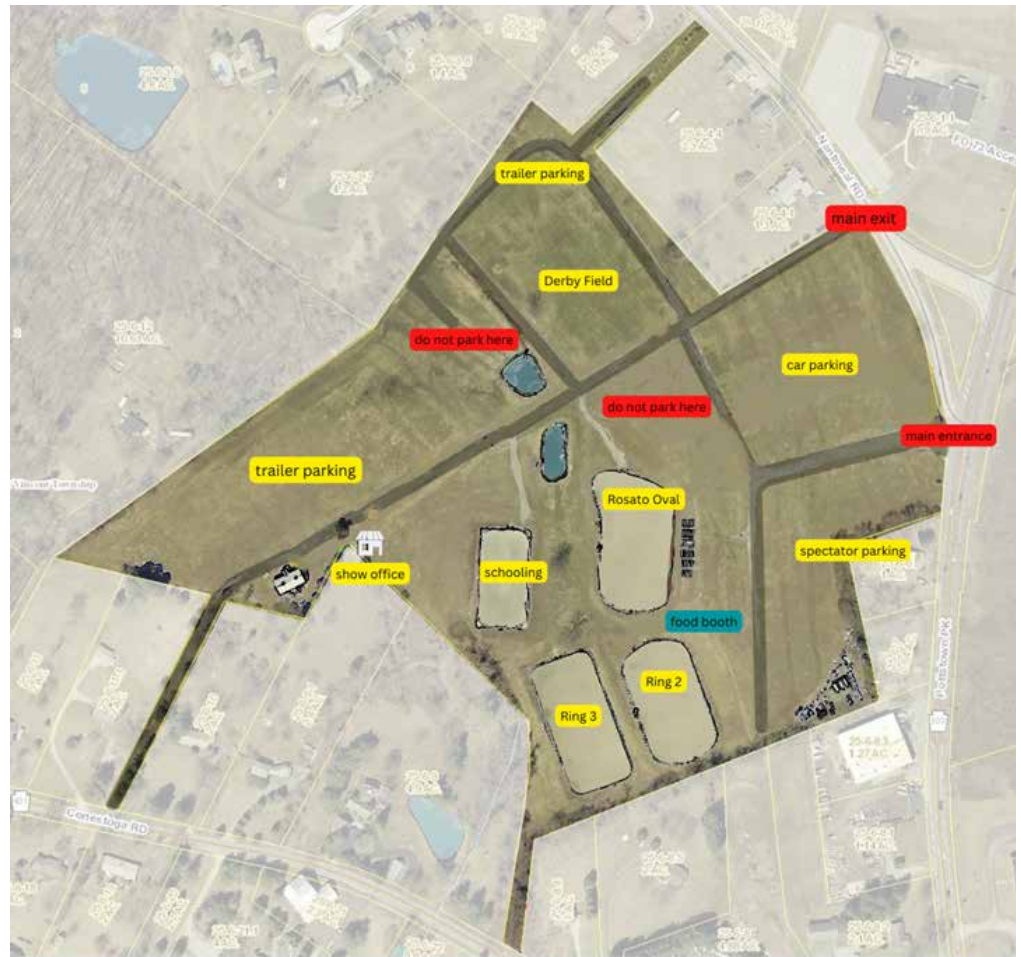
- #1 Blue/Red Warm Up (open card)
- #26 Modified Hunter 2'3' O/F
- #27 Modified Hunter O/F
- #28 Modified Hunter O/F
- #29 Modified Hunter U/S
- #20 Baby Green Hunter 2'3-2'6" O/F
- #21 Baby Green Hunter O/F
- #22 Baby Green Hunter O/F
- #23 Baby Green Hunter U/S
- #24 Young Hunter Pony US
- #25 Young Hunter US
- #30 TB Hunter 2'3 - 2'6 O/F
- #31 TB Hunter O/F
- #32 TB Hunter US
- #33 Pleasure Horse WT
- #34 Pleasure Horse WTC
- #35 Pleasure Horse 2'6 O/F
- #36 Open Equitation WT
- #37 Open Equitation WTC
- #38 Open Equitation 2'6 O/F
- #40 Low Hunter 2'9 O/F
- #41 Low Hunter O/F
- #42 Low Hunter U/S
- #43 Jr/Am Handler
- #52 Pyranha™ Children's Horse Medal
- #44 Children's Hunter Horse 3' O/F
- #45 Children's Hunter Horse O/F
- #46 \$100 Children's Hunter Stake
- #47 Children's Hunter Horse U/S
- #53 Dover Saddlery Adult Medal
- #48 Adult Amateur Hunter 3' O/F
- #49 Adult Amateur Hunter O/F
- #50 \$100 Adult Amateur Hunter Stake
- #51 Adult Amateur Hunter U/S

## Ring 3 – 8 AM start

(7 AM - 7:45 AM Schooling only for S/S through Pleasure Pony)

- #60 Mini-Stirrup W
- #61 Mini-Stirrup WT Equitation
- #62 Mini-Stirrup WT Pleasure
- #63 Shortest Stirrup EQ W
- #64 Shortest Stirrup EQ WT
- #65 Shortest Stirrup EQ 4 X-rails
- #66 Short Stirrup EQ WT
- #67 Short Stirrup EQ WTC
- #68 Short Stirrup EQ 4 X-rails
- #69 Short Stirrup EQ 8 X-rails
- #54 Mini-Medal 18"
- #70 Beginner Rider WT
- #71 Beginner Rider WTC
- #72 Beginner Rider 8 X-rails
- #73 Pleasure Pony WT
- #74 Pleasure Pony WTC
- #75 Pleasure Pony O/F 2'
- #2 Blue/Red Warm Up (open card)
- #76 Low Children's Hunter Pony 2' O/F
- #77 Low Children's Hunter Pony O/F
- #78 Low Children's Hunter Stake
- #79 Low Children's Hunter Pony U/S
- #80 Pony Model
- #58 M&S Pony Medal (open card)
- #81 Children's Hunter Pony S/M O/F
- #82 Children's Hunter Pony S/M O/F
- #83 \$100 Children's Hunter Pony S/M Stake
- #84 Children's Hunter Pony S/M U/S
- #85 Children's Hunter Pony Large O/F
- #86 Children's Hunter Pony Large O/F
- #87 \$100 Children's Hunter Pony Large Stake
- #88 Children's Hunter Pony Large U/S
- #55 M&S 2'6" Children's Medal
- #89 Low Children's Hunter Horse 2'6 O/F
- #90 Low Children's Hunter Horse O/F
- #91 Low Children's Hunter Horse Stake
- #92 Low Children's Hunter Horse U/S
- #56 M&S 2'6" Adult Medal
- #93 Low Adult Hunter 2'6 O/F
- #94 Low Adult Hunter O/F
- #95 Low Adult Hunter Stake
- #96 Low Adult Hunter U/S

## CLASS SCHEDULE, CONT.



Ludwig's Corner Horse Show Grounds

## Derby Field – 9 AM start

- #100 Lead Line W
- #101 Lead Line W/T
- #102 Lead Line Advanced
- #103 Schooling Round (open card, open to all)
- #104 \$500 Fenceworks Jr/Am 2' Hunter Derby
- #105 \$500 Hunter Team Challenge
- #106 Fox Hunter 2'6 O/F
- #107 \$250 Fox Hunter Handy
- #108 Fox Hunter U/S
- #109 \$1000 Beaver Hill Farm Jr/Am 2'6 Hunter Derby



**REGISTER**  
**ONLINE**



**KIMBERTON HUNT CLUB**

Please make check payable to: **Kimberton Hunt Club**

<b>Back #</b>	<b>Name of Horse</b>	<b>Color</b>	<b>Sex</b>	<b>Ht.</b>	<b>Age</b>	<b>Horse/Pony</b>
						Sm Md Lg
<b>Name of Rider #1</b>	<b>Age</b>	<b>Classes:</b>				
<b>Name of Rider #2</b>	<b>Age</b>	<b>Classes:</b>				
<b>Owner or Authorized Agent</b>	<b>Rider # 1</b>	<b>Trainer</b>				
<b>Owner's Name:</b>	<b>Rider Name:</b>	<b>Trainer Name:</b>				
<b>Address:</b>	<b>Address:</b>	<b>Address:</b>				
<b>Phone #:</b>	<b>Phone #:</b>	<b>Phone #:</b>				
<b>Recipient of Prize Money Awards</b> <input checked="" type="checkbox"/>						
<b>SSN or Tax ID:</b>	<b>Address:</b>					

**Credit Card Payments:**

Mastercard     Discover  
 VISA             AMEX

Card Account Number \_\_\_\_\_

Expiration Date \_\_\_\_\_ Credit Card CW# \_\_\_\_\_

Name on Card \_\_\_\_\_

**Credit Card Fee \$3 or 3%**

YES, I would like to receive emails about future Kimberton Hunt Club Events. Email Address: \_\_\_\_\_

**USHJA OUTREACH ENTRY AGREEMENT** By entering this OUTREACH COMPETITION and signing this entry blank as the Owner, Lessee, Trainer, Manager, Agent, Coach, Driver, Rider, Handler, Vaultier or Longeur and on behalf of myself and my principals, representatives, employees and agents, I agree that I am subject to the Rules of The Kimberton Hunt Club, rules and regulations and the local rules of the competition. I will accept as final the decision of the management on any question arising under the Rules, and agree to release and hold harmless the competition, KHC., their officials, directors and employees for any action taken under the Rules. I represent that I am eligible to enter and/or participate under the Rules, and every horse I am entering is eligible as entered. I also agree that as a condition of and in consideration of acceptance of entry, KHC and/or the Competition may use or assign photographs, videos, audios, cable - casts, broadcasts, internet, film, new media or other likenesses of me and my horse taken during the course of the competition for the promotion, coverage or benefit of the competition, sport. Those likenesses shall not be used to advertise a product and they may not be used in such a way as to jeopardize amateur status. I hereby expressly and irrevocably waive and release any rights in connection with such use, including any claim to compensation, invasion of privacy, right of publicity, or to misappropriation. This document waives important legal rights. Read it carefully before signing. I AGREE in consideration for my participation in this Competition to the following: I AGREE that "KHC" and "Competition" as used herein includes the Licensee and Competition Management, as well as all of their officials, officers, directors, employees, agents, personnel, volunteers and Federation affiliates. I AGREE that I choose to participate voluntarily in the Competition with my horse, as a rider, driver, handler, vaultier, longeur, lessee, owner, agent, coach, trainer, or as parent or guardian of a junior exhibitor. I am fully aware and acknowledge that horse sports and the Competition involve inherent dangerous risks of accident, loss, and serious bodily injury including broken bones, head injuries, trauma, pain, suffering, or death. ("Harm"). I AGREE to hold harmless and release KHC., and the Competition from all claims for money damages or otherwise for any Harm to me or my horse and for any Harm of any nature caused by me or my horse to others, even if the Harm arises or results, directly or indirectly, from the negligence of KHC. or the Competition. I AGREE to expressly assume all risks of Harm to me or my horse, including Harm resulting from the negligence of the Federation or the Competition. I AGREE to indemnify (that is, to pay any losses, damages, or costs incurred by) KHC. and the Competition and to hold them harmless with respect to claims for Harm to me or my horse, and for claims made by others for any Harm caused by me or my horse while at the Competition. I have read the Rules AND REGULATIONS about protective equipment, and I understand that I am entitled to wear protective equipment without penalty, and I acknowledge that KHC. strongly encourages me to do so while WARNING that no protective equipment can guard against all injuries. If I am a parent or guardian of a junior exhibitor, I consent to the child's participation and AGREE to all of the above provisions and AGREE to assume all of the obligations of this Release on the child's behalf I represent that I have the requisite training, coaching and abilities to safely compete in this competition. I AGREE that if I am injured at this competition, the medical personnel treating my injuries may provide information on my injury and treatment to KHC office staff. BY SIGNING BELOW, I AGREE to be bound by all applicable competition rules and all terms and provisions of this entry blank and all terms and provisions of this Prize List. If I am signing and submitting this Agreement electronically, I acknowledge that my electronic signature shall have the same validity, force and effect as if I affixed my signature by my own hand.

**OWNER:** \_\_\_\_\_ **RIDER:** \_\_\_\_\_ **TRAINER:** \_\_\_\_\_

**SIGNATURE:** \_\_\_\_\_ **SIGNATURE:** \_\_\_\_\_ **SIGNATURE:** \_\_\_\_\_

**PRINT NAME:** \_\_\_\_\_ **PRINT NAME:** \_\_\_\_\_ **PRINT NAME:** \_\_\_\_\_

**PARENT/GUARDIAN** \_\_\_\_\_ **PARENT/GUARDIAN:** \_\_\_\_\_

**SIGNATURE (required if rider is a minor)** \_\_\_\_\_ **PRINT NAME** \_\_\_\_\_