

79TH ANNUAL KIMBERTON HUNT

HORSE SHOW

SUNDAY,
APRIL 28TH, 2024

LUDWIG'S CORNER SHOW GROUNDS

Hunters, Jumpers, EQ, TBs, In-Hand, Fox Hunters
PHSA Regional • USHJA Outreach

Platinum Sponsors

Anonymous Donor

Dr. & Mrs. Donald J. Rosato / St. Matthew's Place

Grand Champion Sponsors



S & K Mechanical
Services LLC



\$8500 KHC Mini Prix
\$1500 High Ch/Ad Classic
\$1500 Open Gambler's Choice
\$1000 Welcome Stake
\$1000 Beaver Hill Farm Jr/AM Derby
\$500 Fenceworks Jr/Am Derby
Hunter & Jumper Stakes



Show proceeds benefit the Kimberton Hounds

Pre-Enter Wed. April 24th on HorseShowing.com

  @KimbertonHuntClub

PICKERING VALLEY FEED & FARM EXPERTISE



Get the supplies and answers you need for a healthy horse and a healthy pasture.



For more info visit pickeringvalleyfeed.com

WE DELIVER!

Contact us at

610-363-8810

for more information

\$2 OFF

ALL

Purina Mills Products

Offer good through June 2024.

Offer IN STORE ONLY. Maximum of 5 bags



The following have been invited to officiate.
The Committee reserves the right to vary or add to these names.

JUDGES

**Rebecca Gibson, Mohnton PA
r H/HE**

**Pamela Landis, Chester Springs PA
R H/HE**

**Elizabeth Perry, Ringoes NJ
R H/HE**

**Abbe Wolfe, Abington PA
R J**

VETERINARIAN ON CALL

Stillmeadow Equine Vet. 610-686-6006

FARRIER ON PREMISE

Shirk's Shoeing 610-587-6861

EMT

Karen Boland Hughes

SHOW MANAGER

**Barb Mueller & Wendy Silverwood
info@kimbertonhunt.org**

TECHNICAL COORDINATOR

Ashley Spangler

COURSE DESIGN

Kimberton Hunt Club

SHOW OFFICE

**Katie Benson & Eric Claussen
Email: JackKate@aol.com
Day of Show: 908-800-3135**

HOSPITALITY

Kimberton Hunt Club

AWARDS

Becca Pelet, Erin Hails, & Donna Park



Attention:

This Prize List has
LIVE LINKS

Please click on the **ads & underlined text** to open supporting web content.

Thank you for taking a few minutes to review the many local and small businesses who support this horse show and their community.

Reliable Protection. **Expect It.**

Mortality • Liability • Farm

Let our experienced, knowledgeable staff find the right insurance product for you.



Equine Insurance Agency

800.734.0598

www.hallmarkhorse.com



EQUESTRIAN THERAPY

Experience the Wonder!

WWW.HOPE-SPRINGS.ORG

610 - 827 - 0931

CHESTER SPRINGS, PA

has a **NEW HOME** at



In The Heart of Hunt Country

WARWICK

Auto Body

Elverson, PA • 610.587.1309



Opening the Door to Your Dreams

Theresa "Terry" O'Brien
Global Real Estate Advisor
c. 646.620.4900
tobrien@kurfiss.com



Kurfiss

Sotheby's
INTERNATIONAL REALTY

25 MORRIS AVE, BRYN MAWR, PA 19010
KURFISS.COM | 610.229.9011



Attention:

This Prize List has
LIVE LINKS!

Please click on the ads &
underlined text to open
supporting web content.

Equine Dentistry
Magna Wave Therapy
Horse Training
Boutique Horses for Sale

CLEVELAND YARD SOUTH LLC
609.304.8341
ClevelandYardSouth.com

Custom-made
pleasure and
show harness



In the Village of Churchtown
2178 Main Street
Narvon, PA 17555



Harness and Tack Co.
Saddle & Tack Repair
Ph. 717-445-4050

New & Used
Saddles

Hours:
M-F 8:00-5:00
Sat 8:00-3:00



info@ahharness.com
www.ahharness.com
Owner: Harry Martin

Mane Line Stables

Elverson, PA

ENGLISH & WESTERN
FOALING SERVICES
LESSONS & CAMP
...and MORE!



Good Luck to the Exhibitors!

from the

The Delaney Grandchildren



Katie, Brent, Hayden, Lainey, Cade, Norah & Keira

SPONSOR OF THE
\$500. Fenceworks
Jr/Am 2' Derby

FENCEWORKS

A full-service fence installation &
wholesale fencing supplier

www.fenceworks.net



SIANA LAW

EXPERIENCE - SERVICE - RESULTS

business • municipal • civil litigation • employment • education • real estate and land use matters

941 Pottstown Pike
Suite 200
Chester Springs, PA 19425

Phone: (610) 321-5500
email: info@sianalaw.com



Chester County's Oldest Independent Realtor

At James A. Cochrane, Inc., we know that it's not just about buying or selling a home. It's about building long lasting relationships with our clients and our community. Ever since 1964, we've been doing just that all over Chester County. From family homes to large farms, we love helping our clients find their dream homes.

Visit us at our offices at the old train station in the village of Kimberton, PA or online at www.cochraneinc.com.



James A. Cochrane, Inc.
REALTORS
610.469.6100





RULES & REGULATIONS / EXHIBITOR INFO

All questions not covered in these rules & regulations shall be decided by the show committee/management whose decision shall be final.

Entries close the Wednesday prior to the show at 6:00 P.M. and are accepted First Come, First Served. However, in order to accommodate a timely Schedule, the Committee/Show Office reserves the right to close entries for any class/division before this deadline. We encourage you to enter early.

Please enter either:

Online: Horseshowing.com

Please be sure to hit "submit" to properly complete your entry to the show. Horseshowing .com will send you an email confirmation of your entry.

Email: your completed & signed entry blank as a PDF to: JackKate@aol.com

Post entries MAY be accepted, if the schedule allows, and will incur a \$25.00 post entry fee. Post Entries close 12 noon on Friday. No Walk-Ins.

Complete your entry blank with correct info for owner, rider, trainer and horse with the required signatures and bring any relevant documentation to the show. Incomplete or illegible entries will incur a post entry fee. (i.e. please do not use "same" when completing entry)

1. Every horse entered for competition will do so with the agreement that Owner/Rider/Trainer has read the Official Prize List & Entry Blank; agrees to follow all class specifications, rules, requirements, regulations and conditions listed therein. In the case of an incomplete entry blank by a rider/trainer/coach/owner and/or parent, the first entrance into the ring as an exhibitor shall be construed as their acceptance of the rules & regulations of the competition and KHC and shall make them subject to those rules & regulations. Participants using an online entry system for this competition do so with the agreement that they have read the official prize list & entry blank and agree to follow all class specifications, rules, regulations and conditions in the official prize list and on the entry blank.
2. A \$28.00 non-refundable fee will be charged to all entries picking up a back number to cover EMT/Office/Grounds/Outreach fees. (Lead Line exempt)
3. Entries can be paid with Cash, Venmo, a signed open Check made payable to "Kimberton Hunt Club" with your completed & signed entry at the show office. Checks must have a daytime phone number on them. Credit cards may be accepted, but will incur a fee.
4. A current negative Coggins must accompany your entry at the show office. Please bring your horse's documentation of EIV & EHV vaccinations.
5. Class fees are \$30 per class unless otherwise noted. 8 Ribbons unless otherwise noted. Champion & Reserve Champion awarded in all divisions based on points won in classes throughout a section. Please allow 30 minutes after the end of a division for the show office to compute Champion & Reserve.



**REGISTER
ONLINE**



Protect your ideas

Patents • Trademarks • Trade Secrets • Copyrights • Licensing



petock&petock
Intellectual Property Attorneys

610.935.8600 | email: mp@petocklaw.com | petocklaw.com

Proud Sponsor of the
\$1,000. BEAVER HILL FARM
JR/AM 2'6" DERBY

*Dear Competitors,
We are excited to sponsor this fun, inviting class again
in 2024. Put in the work and we know you will have a
great ride come show day!*

Kick On!

Karen & Edward Cook

Beaver Hill



Farm

c. 1790

6. No fee for Scratch/Add, but must be done with the Show Office. Any entry that has competed, must pay those class fee(s). All entries not paid at the horse show will incur a \$50.00 late payment fee. All returned checks will incur a \$50 fee.
7. To be eligible for a Hunter Stake class, the horse must enter in at least one other class in the same division. To be eligible for the Mini-Prix, the horse must have competed in the Welcome Stake.
8. Prize money will be applied to exhibitor's account. Any checks must be cashed within 30 days or they will not be honored. Indicated prize money classes need 12 entries to fill. If the minimum entry requirement is not met, management reserves the right to run as a 100% Entry Fee Sweepstakes paying to 4 places: 50%, 30%, 15%, 5%. Sweepstakes classes need 6 to fill.
9. Riders must wear properly fastened ASTM/SEI approved protective headgear and horse's entry back number while mounted anywhere on the competition grounds. No ear bud or cell phone use while mounted in show or schooling rings, or while lunging on the grounds.
10. Hunter courses may include gates, walls, brush, coop, post and rail, oxers, in and outs, and combinations. Jumper courses may include verticals, oxers, panels, gates, spreads, combinations. No Liverpools.
11. Hunters will be judged on performance, soundness and manners, unless otherwise indicated.
12. A jump order will be established at the gate with the starter. Mini-Prix order of go will be determined by the placings in the Welcome Stake.
13. All ties in jumpers, other than first will be broken by time.
14. The Kimberton Hunt Club, The Horse Show, The Show Committee will not be held responsible for any loss, damage or accident that may occur to any rider, driver, groom, coach, trainer, attendant, animal or equipment at the show. It shall be a condition of entry that each exhibitor shall hold the Hunt Club, the Horse Show & Show Committee, its members, directors, employees, volunteers, contractors, sponsoring entities and the facility harmless for any loss or accident to horse, human or equipment, which may occur. Owner/Rider/Trainer are responsible for the welfare of their horse at the competition.
15. The Committee/Management reserves the right to cancel/combine, move or substitute classes at their discretion; to change any course; to change rings or judges; to add a mandatory (dotted) line; to change specifications in jumper classes in order to facilitate the time schedule or as competition warrants; to place a 2 minute timer on a gate. Exhibitors must advise the in-gate of any conflicts. Under Saddle classes will not be held up due to trainer conflict. The Rosato Oval is the priority ring. Please be ready for your class.
16. Exhibitors are notified that any act of discourtesy or disobedience to the judges, officials, show committee or volunteers on the part of any owner, rider, trainer, coach, groom or family member may disqualify the horse, and the owner shall forfeit all entry and other fees. The Committee/Management reserves the right to deny any entry at this show and in the future.

DEERE SEASON



Z320R Zero-Turn-Radius Mower

- 42" Accel Deep Deck
- 21 H.P. V-twin Engine K series
- 20" High Back Seat
- 3 Year 200 Hour Bumper to Bumper Warranty



1025R Sub Compact Utility Tractor

- 23.9 H.P. Diesel Engine
- 2 Range Automatic Transmission
- Available Factory Cab
- Available Quick-Tach Loader
- 72 Month 2000 Hour Powertrain Warranty



X350 Lawn Tractor

- 42" Accel Deep Deck
- 21 H.P. V-twin Engine K series
- Automatic Transmission
- 4 Year 300 Hour Bumper to Bumper Warranty

221 Boot Road
Downingtown, PA 19335
610-873-2001

2555 Pottstown Pike
Pottstown PA 19465
484-985-8021



JOHN DEERE

Little's

141 E. Main Street
Silverdale, PA 18962
215-257-5177

335 S. York Road
Hatboro, PA 19040
215-672-4100

Rt. 29 and Little Rd.
Zieglerville, PA 19402
610-287-9643

www.relittle.com

17. Kimberton Hunt Club may use or assign photographs, videos, audios or other likeness of exhibitors and horses taken during the course of the competition for the ongoing promotion, coverage or benefit of the competition in 2024 or the future. All rights in connection with such use, including any claim to compensation, invasion of privacy, right of publicity, or to misappropriation are expressly and irrevocably waived.

18. Schooling: a paid Warm Up class replaces Hunter schooling in the show rings unless otherwise noted on the schedule. A paid Schooling round open to all is offered on the Derby Field. Hacking only in Ring 2 before the show. Jumpers do one course walk before the division. Schooling will be permitted only in areas provided by the Committee. Exhibitors are responsible for any jump taken while schooling.

19. All pets must be kept on a leash. All motorized vehicles (including E-bikes & scooters) must be operated by a licensed driver.

How Many & Results – Horseshowing.com

The Rosato Oval: 160' x 300' GGT & sand mix.

Ring 2: 150' x 270' sand/stone dust.

Ring 3: 160' x 250' sand/stone dust.

Schooling Ring: 100' x 200' sand/stone dust.

Lunging area 100' x 100' grass.

Stabling is not provided at this show.

MEMBERSHIPS

Points can be earned with the following organizations at the Kimberton Hunt horse show. Please ensure your membership and/or your horse's membership/registration is current if you wish points to accrue.

USHJA Outreach:

www.ushja.org Competition
ID #1690

PHSA Regional:

www.pennhsa.org

2024 SHOW PHOTOGRAPHY BY:



SCAN THE QR-CODE
TO SEE YOUR SHOW PHOTOS

LUDWIG'S

GRILL & OYSTER BAR

**BUCK-A-SHUCK
EVERY WED-THUR
3:30-9:00PM**

SCHEDULE YOUR NEXT EVENT AT LUDWIG'S
2904 CONESTOGA ROAD, GLENMOORE, PA
610-458-5336
WWW.LUDWIGSOYSTERBAR.COM



MENU

PHSA
Pennsylvania Horse Shows Association

SENSENIQ'S
FEED MILL

Hair Today by, Chrissy & Co.

2221 Pottstown Pike Pottstown, Pa.

www.hairtodaypottstown.com

610-469-6194



115 South Railroad Ave.
New Holland, PA 17557
Phone: (717) 354-4756
1(800) 724-2002

www.sensenigsfeed.com



*Offering a wide range
of quality feed, grain
& commodities for
livestock, equine,
small animal & wildlife.*

MONTESANO BROS

TRATTORIA *and* CATERING

**Italian Market • Dining Room • Bar/Taproom • Take Out
Special Event Catering • Corporate Catering**

Local and always fresh!



Quality is our focus, we pride ourselves in using only the freshest local meats and produce. Pairing fresh ingredients with Italian imported olive oils and vinegars is our specialty.

HOURS
TUESDAY-THURSDAY | 11AM-7PM
FRIDAY & SATURDAY | 11AM-8PM
SUNDAY | 9AM-3PM (BREAKFAST 9-11AM)
CLOSED MONDAY

55 Seaboldt Way
Chester Springs, PA 19425
610-458-8065



@montesanobrothers



@montesanobros

<https://themontesanobros.com/>





KING

Setting the standard since 1978

Complete design services and fine craftsmanship
Custom barns, arenas, garages and living quarters

1-888-354-4740 | www.kingbarns.com

Owner: Diana Shirk

484-955-9413

silverliningfarm28@gmail.com



Services:
Lessons
Boarding
Training
Hunter/Jumpers
Fox Hunting

Thank You, Silver Lining Farm!
2024 Jumper Ring Sponsor

EASTERN SHORE



FENCING, LLC

Equestrian Fencing
Run-In Sheds
Cross Country Jumps

easternshorefencing.com
easternshorefencing24@gmail.com

484-661-3057





KIMBERTON HUNT CLUB

On behalf of the officers and members of the Kimberton Hunt Club, Inc., I invite you to inquire about hunting with us! Our goal is to promote fox chasing, riding, and all equestrian activities.

Kimberton Hunt Club was founded in 1870 and is one of the oldest private packs in the country. It is recognized by the Masters of Foxhounds Association. Our pack of Penn-Marydels is hunted under Huntsman Phil Shirk on Wednesdays and Saturdays.

The country hunted is primarily West Vincent Township, by the courtesy of the landowners whose hospitality makes it possible for the continuation of this traditional sport.

For more information please contact Mrs. Barbara Dunn, President, at info@kimbertonhunt.org or visit our website

kimbertonhunt.org

Kick on & thank you for your support!

Ms. Barbara Mueller
Masters of Foxhounds.

*Come Hunt
with KHC!*



**LEARN
about
FOX
HUNTING**



Horse Sense

PLUS REAL ESTATE SAVVY

Horse Farms take special handling Jackie and her team have what it takes The Jackie Rhoads Team

Experience

Full-Time Real Estate professional since 2005

Market Knowledge

Serving Montgomery, Chester, Bucks, Lancaster
and Berks Counties

Insight

Jackie, Lisa, and Annelise have lifelong
experience with horses

Network

Many connections are looking for horse properties/farms of
all sizes, from backyard barns to turnkey boarding facilities.
If you are buying or selling, our team understands your
needs.

Jackie Rhoads *Realtor*

The Jackie Rhoads Team

504 Harleysville Pike

Souderton Pa 18964

215-723-4150 Office

215-896-0345 cell Best

RhoadsToHome@outlook.com

www.TheJackieRhoadsTeam.com



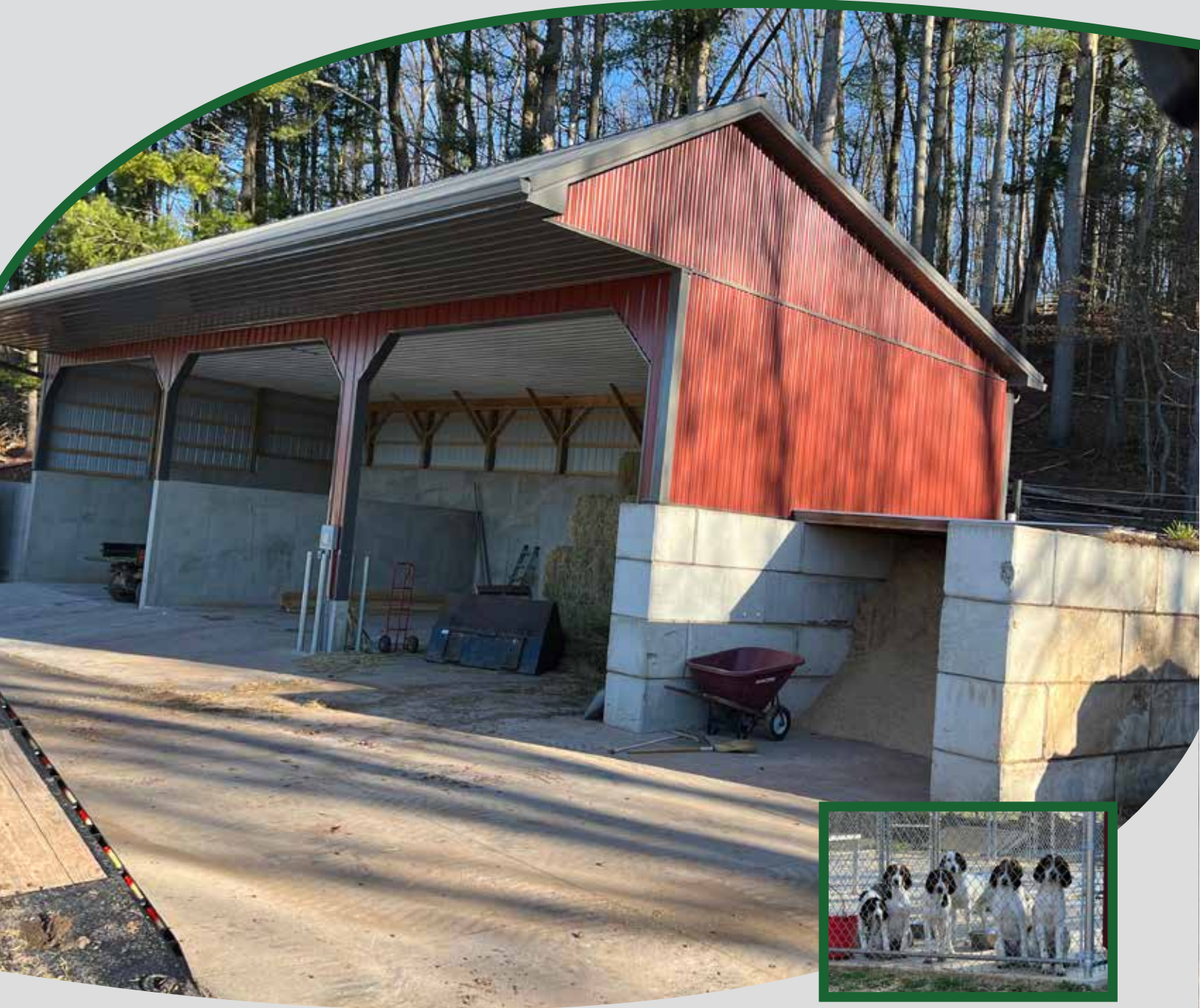
RE/MAX[®]
RELIANCE



Stony Lane

CONSTRUCTION

*Quality concrete construction,
in a timely manner,
at affordable prices.*



CONTACT

Amos Blank

717-725-4404

TO DISCUSS YOUR NEXT CONCRETE PROJECT

The KHC Hounds and their two-legged caretakers thank Amos for the INCREDIBLE construction of KHC's new Kennels - easy to clean, designed with high functionality and ease of use - two thumbs up for Amos!



OUTREACH JUMPER SPECS

ITTY BITTY JUMPER .70m

#3 II.1	\$30
#4 \$650 Classic II.2b (\$275, \$195, \$90, \$90)	\$50

PRELIMINARY JUMPER .80m

Sponsored by Lynne Pennypacker, Pottstown

#5 II.1	\$30
#6 \$650 Classic II.2b (\$275, \$195, \$90, \$90)	\$50

LOW CHILD/ADULT AMATEUR JUMPER .90m

#7 II.1	\$30
#8 \$650 Classic II.2b (\$275, \$195, \$90, \$90)	\$50

\$1500 OPEN GAMBLER'S CHOICE .95M

\$95

Sponsored by Shirk's Shoeing, Birdsboro

#9 Open to all. Riders will have (60) seconds to jump as many obstacles, in any direction and in any order. (No combinations) Each obstacle can be jumped twice and carries from 10 points to 120 points according to its difficulty. No points will be awarded if there is a fault at the fence. The Joker is not part of the main course. After the fixed time has expired, the bell is rung to end the competitor's round. The competitor must cross the finishing line to have his time recorded, then has 20 seconds in which to attempt the Joker. Only one attempt at the Joker is allowed. 200 points are awarded if this obstacle is jumped correctly, but if it is knocked down 200 points must be deducted from the total points obtained by the competitor. See JP 150.1 for full class specs. Joker fence 1.10m. (\$450, \$330, \$255, \$195, \$150, \$120)

HIGH CHILD/ADULT AMATEUR JUMPER 1.10m

#10 \$500 Speed Stake II.1 (\$250, \$150, \$100)	\$40
#11 \$1500 Classic II.2b (\$450, \$330, \$255, \$195, \$150, \$120)	\$95

\$1000 WELCOME STAKE 1.15m

\$80

#12 Open to all. II.1 (\$300, \$220, \$170, \$130, \$100, \$80)

\$8500 KIMBERTON JUMPER CLASSIC 1.25m

\$350

Sponsored by Silver Lining Farm, Birdsboro

#13 Open to horses and ponies that have competed in the Welcome, which will determine Order of Go. 12 minimum to fill, or it becomes a Sweepstakes. Formal Attire required. II.2a. 10 Ribbons. (\$2125, \$1445, \$1105, \$850, \$680, \$510, \$510, \$425, \$425, \$425)

JUMPER TABLES

Table II.1 – Time First Round

Table II.2a - Time First Jump Off, all clean rounds to jump off after all first rounds are completed.

Table II.2b - Time First Jump Off, all clean rounds stay in the ring and jump off immediately.

Table II.2c - Power & Speed. Faults in the Power Phase do not advance.

FENCE HEIGHT CONVERSION

0.70m - 2'3" 0.95m - 3'1" 1.20m - 3'11"

0.75m - 2'5" 1.00m - 3'3" 1.25m - 4'1"

0.80m - 2'7" 1.05m - 3'5" 1.30m - 4'3"

0.85m - 2'9" 1.10m - 3'7" 1.35m - 4'5"

0.90m - 2'11" 1.15m - 3'9" 1.40m - 4'7"

MARRON MAGNAWAVE, LLC

MagnaWave is non-invasive and delivers a pulsed electromagnetic frequency (PEMF) that works at the cellular level to help improve circulation, promote healing, and reduce inflammation and associated pain.

Get ready for show season (or recover from hunt season)!
For your horse, your pets, and you!



Beneficial for:

- Muscle Pain/Soreness
- Arthritis/Joint Pain
- Hoof Abscesses
- Navicular Syndrome
- Tendon/Ligament Issues
- Urinary Incontinence
- More....

Donna Marron

Certified MagnaWave Practitioner

215-272-3258

donna.marronmagnawave@gmail.com

marronmagnawave.com, @marronmagnawave



Attention:

This Prize List has
LIVE LINKS!

Please click on the ads &
underlined text to open
supporting web content.

*Thank you for taking a few minutes to
review the many local and small
businesses who support
this horse show and their community.*



details Horsehair Jewelry

Create a custom keepsake
from your horse or pony's
tail, or choose a stock item.

- bracelets for men & women
- earrings
- keychains
- necklaces

NEW!

- ornaments & suncatchers
- picture frames
- fly whisks

www.detailshorsehairjewelry.com





LEAD LINE

\$20 per class

Sponsored by Kiley & Hunter Mueller, Chester Springs

Open to children 7 years and under. May be shown in English or Western tack.

To be shown on the Derby Field. May not cross enter into other divisions.

#100 Walk. #101 Walk/Trot. #102 Advanced - May be asked to trot, demonstrate a jumping position and/or answer simple questions.

BEGINNER RIDER 18" X-Rails

\$25 per class

Open to juniors & amateur adults in their first year of showing.

#70 WT #71 Walk, Trot, Canter. #72 Over 8 X-rails

MINI-STIRRUP

\$25 per class

Open to children who are not ready to canter. Riders may cross enter into other W/T classes.

#60 Walk. #61 Walk, Trot Equitation. #62 Walk, Trot Pleasure

SHORTEST STIRRUP EQUITATION 18" X-Rails

\$25 per class

Open to children 8 years and under. Riders may not cross enter into any other class where they are required to canter.

#63 Walk. #64 Walk, Trot. #65 Over 4 X-Rails Cantering not required.



SHORT STIRRUP EQUITATION 18" X-Rails

\$25 per class

Best Turned Out Rider award IMO Nina Marta Fox

Open to children 12 years and under. Judged on hands, seat, general appearance and control of mount.

#66 Walk, Trot. #67 Walk, Trot, Canter. #68 Over 4 X-Rails #69 Over 8 X-Rails

OPEN EQUITATION 2'6

\$25 per class

Open to juniors & amateur adults. Judged on hands, seat & control of mount.

#36 Walk, Trot #37 Walk, Trot, Canter. #38 Over Fences



**REGISTER
ONLINE**



Adaptive Medical Clothing

Kozie Clothes is committed to serving the unique need for stylish, fun and therapeutic clothing and products for the Pediatric Special Needs community.

Kozie has a wide range of sensory engineered and Medically designed products for children with special needs

Our Products are geared towards but not limited to:

- Autism
- ADHD
- G-Tube Fed
- Medically Fragile
- Anxiety Disorder
- Downs Syndrome
- Apraxia
- Low Muscle Tone



399 Circle of Progress Drive, Pottstown, PA 19464

Tel: 484-624-5751 • info@kozieclothes.com • www.kozieclothes.com



OUTREACH HUNTER - PLEASURE SPECS

WARM UP ROUND

\$20

#1 Open card/Open to all, to be run with the section over fences in Rings 2 & 3. May be added at the gate.

YOUNG HUNTER U/S

Sponsored by Rebekah Robinson, Chester Springs

#24 PONY

\$25

#25 HORSE

\$25

Five Year Olds and Under suitable to become hunters. To be judged at a walk, trot and canter. Confirmation, 50%; performance, soundness, manners and way of going, 50%. Two or more entries than the number of ribbons awarded are to be stripped for confirmation.

JR/AM HANDLER

\$25

#43

Horse or pony to be shown on the line by an Amateur or Junior. To be judged on presentation of the animal to the judge, neatness and appearance of the handler, and the overall condition of the animal. Conformation will not be a determining factor.

BEGINNER HUNTER 18" X-Rails

\$30 per class

Sponsored by Mimi & Scott Quillman, Chester Springs

Open to all horses & ponies.

#17 Over Fences. #18 Over Fences. #19 Under Saddle.

PLEASURE PONY 2'

\$30 per class

Sponsored by Gigi Fitzgerald, Avondale

Open to all juniors and judged with emphasis on manners and suitability. No oxers.

#73 Walk/Trot. #74 Walk, Trot, Canter. #75 Over Fences.

MODIFIED HUNTER 2'

\$30 per class

Sponsored by Jon & Gail Smith, Cochranville

Open to all horses & ponies to be ridden by juniors & adults.

#26 Over Fences. #27 Over Fences. #28 Under Saddle.

BABY GREEN HUNTER 2'

\$30 per class

Sponsored by The Williamson Family, Glenmoore

Open to all horses and ponies in their 1st or 2nd year of showing over fences.

Trotting of corners not to be penalized.

#20 Over Fences. #21 Over Fences. #22 Under Saddle.

TRAINING HUNTER 2'3

\$30 per class

Sponsored by Donna Marron/Marron Magnawave, Harleyville

Open to all on horses & ponies.

#14 Over Fences. #15 Over Fences. #16 Under Saddle.

MAXIMA HAIR DESIGN

610-687-2887

237 E. SWEDES FORD ROAD
WAYNE, PA 19087



MELESIO & TRAVIS

Call today: 610-592-6429

- Junk Removal
- Clean Outs
- Pressure Washing
- Hauling
- Demolitions

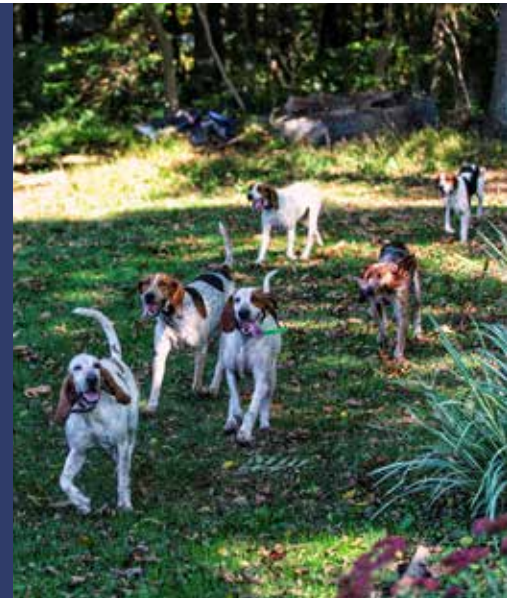


SHIRK'S SHOERING

PHIL & ENOS SHIRK
SERVING SE PA,
MD & NYC

Proud Sponsor of
the 2024
Kimberton
Horse Show
Jumper Ring

- 📞 Phil Shirk 610-587-6861
- 📞 Enos Shirk 484-338-4811



HARE, CHASE & HECKMAN INC.

SINCE 1867

Insurance Agents and Consultants

Established in 1867, Hare Chase and Heckman, Inc is an independent agency located in Paoli, Pa. Our Years of experience benefit our personal insurance and business clients.



Phone: 610-640-4400

www.harechaseandheckman.com



OUTREACH HUNTER -PLEASURE SPECS

THOROUGHBRED HUNTER 2'3-2'6

\$30 per class

Sponsored by Pamela Landis & Yellow Springs Farm, Chester Springs

Open to horses registered with The Jockey Club.

#30 Over Fences. #31 Over Fences. #32 Under Saddle.

PLEASURE HORSE 2'6

\$30 per class

Sponsored by Mr. & Mrs. Pearson W. Delaney, Wayne

Open to all horses shown by juniors & adults and judged with emphasis on manners and suitability.

#33 Walk,Trot. #34 Walk, Trot, Canter. #35 Over Fences.

LOW CHILDREN'S HUNTER PONY 2'

\$30 per class

Sponsored by Mr. & Mrs. Edward Baird, Chester Springs

Open to juniors on ponies. Riders may not cross enter into any class where fences exceed 2'9".

#77 Over Fences. #78 \$100 Stake (\$50 \$30 \$10 \$10) #79 Under Saddle.

LOW CHILDREN'S HUNTER HORSE 2'6

\$30 per class

Sponsored by The Pennsylvania Horse Shows Association

Open to juniors on horses. Rider may not cross enter into any class where fences exceed 2'9".

#90 Over Fences. #91 \$100 Stake (\$50 \$30 \$10 \$10) #92 Under Saddle.

LOW ADULT AMATEUR HUNTER 2'6

\$30 per class

Sponsored by Mr. & Mrs. Lee Calhoon, Chester Springs

Open to amateur adults. Riders may not cross enter into any class where fences exceed 2'9".

#94 Over Fences. #95 \$100 Stake (\$50 \$30 \$10 \$10) #96 Under Saddle.

PONY MODEL

\$30

#80. Pony to be shown on the line by a Junior. To be judged on presentation of the animal to the judge, neatness and appearance of the handler, and the overall condition of the animal. Conformation will not be a determining factor. Points not to count toward the division.

CHILDREN'S HUNTER PONY S/M 2', L 2'6

\$30 per class

Sponsored by deTails Horsehair Jewelry, Parkerford

Open to all juniors on ponies. Small/Mediums to go first.

#82 Over Fences. #83 \$100 Stake (\$50, 30, 10, 10) #84 Under Saddle.

LOW HUNTER 2'9

\$30 per class

Sponsored by Susan Smith & Don Cochran, Honeybrook

Open to all on horses & ponies.

#40 Over Fences. #41 Over Fences. #42 Under Saddle.

OPEN HUNTER 3'

\$30 per class

Sponsored by Mane Line Stables, Elverson

Open to all on horses.

#45 Over Fences. #46 \$100 Stake (\$50 \$30 \$10 \$10) #47 Under Saddle.



**REGISTER
ONLINE**



Masonry, Hardscaping,
Landscaping, and Fencing.

**FULL STOCK
OF MULCH:
SCHEDULE
DELIVERY
OR PICK UP**



We offer a wide range of Masonry, Hardscaping, Landscaping, and Fencing Products

Brick
Building Materials
Bulk Materials
Flagstone

Hardscape Materials
Landscape Supplies
Masonry Supplies
Natural Stone
Seasonal Materials

On-Site Displays
On-Site Fabrications
Treads & Sills
Veneers

Stony Run Supply is open to contractors & homeowners

STONYRUNSUPPLY.COM

Mon. – Fri., 6:3 am to 4pm
Sat., 7am – 12pm



OUTREACH DERBY FIELD SPECS

SCHOOLING ROUND

\$25

#103 . Open card/Open to all, to be run with the current fence height. You may pick your own course. One round permitted for horses/ponies competing in the 2' or 2'6" Hunter Derby. Up to three rounds permitted for horses/ponies NOT competing in a Hunter Derby.



FOX HUNTER 2'6

\$30 per class

Sponsored by Barbara Dunn IHO Sandy Dunn MFH of Kimberton Hunt 1975-2023.

Open to all horses & ponies that have hunted this past season. Need not be MFHA. Formal or Ratcatcher attire. Proper hunt appointments encouraged. Winner receives 2 cap fees courtesy of KHC.

#106 Over Fences. #107 \$250 Handy (\$125, 75, 25, 25) #108 Under Saddle.

FOX HUNTER EQUITATION 2'6

\$20

#110 Must compete in the Fox Hunter Division to be eligible. Show off your best "heels down, sit back, thumbs up" through a course of hunt field challenges. Judged on hands, seat and the basic equitation skills Fox Hunters practice through the season. Fences not to exceed 2'6. Extra points awarded for trying your best.

HUNT TEAMS 2' & 2'6

\$20 per horse

Sponsored by the Dunn & Mueller Families, Chester Springs

#105 Open to all, to be run as an open card. Entries to ride over the posted course, following at a fair hunting pace. To halt & hold hard after the last fence. Please declare fence height in show office.

HUNTER DERBIES - Hunt n' Go Format

Presented by the Dunn & Mueller Families

Open to juniors & amateur adults on horses & ponies. This format consists of two phases, jumped consecutively. Competitors will jump the first phase as a Classic Hunter round with a high option(s). Stay in, pick up their pace and pass through a set of markers to begin their Handy Hunter round, consisting of 5 – 8 fences with a high option(s); with pace, brilliance and a shorter track to be rewarded. Formal attire not required.



\$500 FENCEWORKS 2' HUNTER DERBY

\$45

#104

(\$150 \$110 \$65 \$40 \$30 \$25 \$20 \$15 \$15 \$10 \$10 \$10)



\$1000 BEAVER HILL FARM 2'6 HUNTER DERBY

\$90

#109 12 entries to fill, or it becomes a sweepstakes.

(\$300 \$220 \$130 \$80 \$60 \$50 \$40 \$30 \$30 \$20 \$20 \$20)

Congratulations
to Kimberton Hunt
for over 150 years in the
Chester Springs community!
Best Wishes to the exhibitors in this
year's horse show!



*Thank you to Dr. & Mrs. Donald Rosato
of St. Matthew's Place, Chester Springs.
Supporters of the Kimberton Hunt and
their gracious donation to the
79th Annual Horse Show.*





GREAT OAK
WEALTH MANAGEMENT

A financial firm
that understands
the equestrian life,
because we live it.

At Great Oak we care about helping you support your passion. Equestrianism is a huge financial commitment, and we're here to help you make it with confidence.

CLICK HERE
TO LEARN
MORE

As a lifelong equestrian, I know firsthand the unique costs, risks, and challenges this passion presents. That's why I care deeply about ensuring your financial plan is customized to reflect you and your lifestyle. At Great Oak Wealth Management we'll help align your financial plan with your longterm riding goals.

Gillian McCarthy, CFP® | 484-207-0440
www.greatoakadvisors.com

SKRS PHOTOGRAPHY



SPECIALIZING IN...

PET PORTRAITS
HS SENIOR PORTRAITS
FAMILY PORTRAITS

WWW.SKRS PHOTOGRAPHY.COM

ASK ABOUT EQUINE SESSIONS
BOOKING SPRING & SUMMER 2024!



Attention:

This Prize List has
LIVE LINKS!

Please click on the ads &
underlined text to open
supporting web content.



Local Plumbing, Pipe Fitting
and Welding Contractor

Phone (484) 942-8092
Email info@skmechanicalservicesllc.com



Pipe Fitting



Plumbing



Welding



Water Heaters



Groove Lock



Pump Skids



MANAGEMENT INC.

"Turf You Can Play On"

- * Mowing Services
- * Soil Balancing Program
- * Aeration
- * Seeding
- * Renovation
- * Landscape Design, Installation & Maintenance

SPECIALIZING IN EQUESTRIAN PROPERTIES

Grass Management, Inc. is a full service company that can help you from beginning to end. For more information and pricing, contact us by:

Phone: 610-436-5055

E-Mail: grassmanagementinc@gmail.com

Or, visit us on the web at:

www.grassmanagementinc.com



CONESTOGA STONE

Landscape Supply Store



PREMIUM ARENA FOOTING

Bulk Stone - Decorative Stone

Sand - Grass Seed - Boulders - Erosion Control
Veneer - Soils - Mulch - Flagstone & Much More

Located just West of Route 100 and Route 23

1101 Ridge Road

Pottstown, Pa 19465

610-656-6466

www.conestogastone.com



Mulch, Soil, Stone
Landscaping
Garden Center
Seminars & Workshops
Florist - Everyday & Special Events
Indoor & Outdoor Plants
Annuals & Perennials
Trees & Shrubs
Fruit, Veggies, & Herbs
Gift Shop



745 Schuylkill Road
Phoenixville, PA
610-948-9755

Mon-Sat 9am to 5pm • Sun 9am to 5pm

click for

**SPRING
COUPONS**

Platinum Sponsors

Anonymous Donor

Dr. & Mrs. Donald J. Rosato/St. Matthews Place

Grand Champion Sponsors

Pickering Valley Feed & Farm Store

S & K Mechanical Services LLC

Stony Lane Construction

Blue Ribbon Sponsors

Fenceworks Inc

Sensenig's Feed Mill Inc

Beaver Hill Farm

James A. Cochran, Inc.

Eastern Shore Fencing

Pickering Valley Contractors

Stony Run Supply

Pelet Welding

Fence Sponsor

Siana Law Firm

Show Sponsors & Donors

(listed alphabetically)

Barbara Dunn IHO Sandy Dunn MFH of Kimberton Hunt 1973 - 2023

Colonial Gardens

deTails Horsehair Jewelry

Donna Marron/Marron Magnawave

Dunn & Mueller Families

Gigi Fitzgerald

Hare, Chase & Heckman

Jon & Gail Smith

Kiley & Hunter Mueller

Lynne Pennypacker

Mane Line Stables

Mr. & Mrs. Edward Baird

Mr. & Mrs. Lee Calhoon

Mr. & Mrs. Pearson Delaney

Pamela Landis / Yellow Springs Farm

Pennsylvania Horse Shows Association

Rebekah Robinson

Scott & Mimi Quillman

S & K Mechanical Services LLC

Susan Smith & Don Cochran

Unionville Equine

Williamson Family

Rider Back Numbers

Black Diamond Designs

Ribbons & Awards Sponsors

Erin Beach

Jennifer Wollenberg

Black Horse Stables

Mr & Mrs Kenneth Silverwood

Tom & Kathy Bickel

S & K Mechanical Services LLC

Banner Sponsors

Cellarium Wine Cellars

Conestoga Stone

Hair Today

Hellzapoppin Farm

H&L Mobile Veterinary Services

Pickering Valley Contractors

S & K Mechanical Services LLC

Sanatoga Water Conditioning



& you come **first!**

At S&T Bank, we serve our community. We're on a first name basis. We invest in and give back to our neighbors. **And we take every opportunity to go above and beyond for our customers and communities.**

Our shared future begins with you.

S&TBank

Ludwigs Corner • 610.458.5100 • stbank.com

MEMBER FDIC

WE AGREE -
GOOD ENOUGH
WON'T GET
YOU THE WIN.

From your trailer ladder to the beams supporting the indoor arena,

PELET
WELDING & STEEL FABRICATORS

is one of the highest accredited steel fabricators in the area. Family-owned and operated since 1954, our team can fabricate your next project from design through delivery.

LET'S GET STARTED
610.384.5084
PeletWelding.com





KEARNEY HILLARD

ph: 610-656-2757

custom hunt whips & crops handmade in Chester County



Mary Musheno, PT, DPT, ITPT, LVST BIG

Clinic Director

Graston Certified



direct 610-857-6099

fax 610-857-1816

email mary.musheno@ATipt.com

416 COMMONS DRIVE • PARKESBURG, PA 19365



Charlie and Kay Rohrer

Selway Farm

690 Strasburg Rd.

Paradise, PA 17562

Cell: (717) 314-4756



Dr. Tyra Crowley, VMD

Dr. Annika Frederickson, DVM

Dr. Lauren Klutchka, VMD

ph: 610-686-6006

StillmeadowEquine@gmail.com

www.stillmeadowequine.com

153 Gable Rd, Coatesville, PA 19320

2024 Friends of Kimberton Hunt

First Flight Plus

Mr & Mrs Taylor K. Miller

Bruce Kauffman

Susie Roberts & Jack Werner

First Flight

John Hausladen

George Cooney

G. H. Walleigh

Second Flight

John & Pamela Malkoski

Hilltopper

William Gudal

Patrick Boyle

*Friends help keep a 150 years plus
tradition of hounds, horses &
open space efforts alive and thriving
in Chester County.*



Thank You

The Kimberton Hunt Club would like to extend our heartfelt appreciation to an Anonymous Donor at our 79th annual show, who believes in the tradition of equestrian sport.

Many individuals, families & businesses contribute to the success of the show, and we could not do it without your support!

However, this specific individual allocates prize money each year, to provide the best awards for our competitors. This ensures a fabulous competition and carries on the tradition of our annual show.



Attention:


This Prize List has **LIVE LINKS!**

Please click on the ads & underlined text to open supporting web content.

Thank you for taking a few minutes to review the many local and small businesses who support this horse show and their community.

John and Deborah Hausladen
Members of Kimberton Hunt

The Co Founders of a 501c3 Organization:



Sneakers for SOLDIERS

“Supporting our troops where they need it most...*their feet.*”

www.sneakersforsoldiers.org

New & Used Saddles
Saddle & Tack Repair
Pleasure & Show
Harnesses

FASTRACK™
Equine Supplement

Mon -Fri 8-5
Sat 8-4
2368 Main Street, Narvon, PA

Aaron Martin
Ph: 610-286-4800
www.JRsHarnessSaddle.com



BE A PART OF THE FUN!



EQUINECLICKS PHOTOGRAPHY

HUNTER

Hunter Walk Trot Poles
Hunters 18" or X-rail
Hunters 2'
Hunters 2'3"
Hunters 2'6"
Hunter Derby

EQUITATION

Walk Trot Equitation
Walk Trot Canter Equitation
Equitation 18" or X-rail
Equitation 2'
Equitation 2'3"
Equitation 2'6"

JUMPER

Jumper .75-.80m
Jumper .85m
Jumper .90-95m
Jumper 1.0-1.05m

HOST LOCATION:
Princeton Classic Finale
August 2-6, 2023
Princeton Show Jumping
Princeton, NJ

How to Qualify for the Outreach Festival:

- Riders must be a USHJA member at the free Outreach level (or higher) within one week of competing in an Outreach Series competition. Rider may complete an application at the show or join online via the USHJA website and have a seven day window to become a member.
- Must have competed in at least one Outreach Series Competition
- Horses do not need to be registered or microchipped in order to participate. Those wishing to have their horses earn Outreach points must record them with USHJA (\$20/annual or \$75/lifetime)

Zone 2 Outreach Series Competitions:

Autumn Riders - E Freehold, NJ
Black River - Ringoes, NJ
Brass Ring - Elverson, PA
CJL Inc - NJ and PA locations
DDR Farm - Melville, NY
Hidden Pond Stables - Manorville, NY

Hudson Valley Horse Shows - all locations
In & Out Jumper Series - Dover, DE
Kimberton Hunt - Glenmoore, PA
Long Island Horse Shows - Setauket, NY
Lotus Show Stables - Long Valley, NJ
Making Strides Series - Church Hill, MD

Princeton Show Jumping - Princeton, NJ
Smoke Rise Riding Club - Kinnelon, NJ
Sussex Co. Benefit - Augusta, NJ
Swan Lake - Littlestown, PA
Winding Hills Stables - Northport, NY

Join the fun at ushja.org/outreach/
Memberships are free!

**BEST OF LUCK
to the EXHIBITORS
at the
79th ANNUAL
KIMBERTON HUNT HORSE SHOW**



YELLOW SPRINGS FARM

*SPECIALIZING IN OFF TRACK THOROUGHBREDS
COME SEE OUR GROUP OF YOUNG HORSES
STARTING THEIR NEW CAREERS*

Pam Landis "R" USEF Judge

Hunters, Equitation, Jumpers, and Hunter Breeding

1346 VILLAGE LANE
CHESTER SPRINGS, PA 19425
610-329-9637



**UNIONVILLE
EQUINE**
ASSOCIATES, P.C.
COMPREHENSIVE VETERINARY CARE

25 Webster Lane, Oxford, PA 19363
p 610-932-6800 • f 610-932-6801
ueavet.com • info@ueavet.com

Explore UEA's Comprehensive Services



USEF Judge
"R" H, HE, J, HB

Pamela J. Landis

Equine Services, Showing, Sales
1645 SW Thornberry Circle
Palm City, FL 34990

Cell: 610-329-9637
Email: pamelalandiscpa@gmail.com

Tax & Accounting Services
Consulting Services
FL & PA Certified

PAMELA J. LANDIS, CPA

1645 SW Thornberry Circle
Palm City, FL 34990

Cell: 610-329-9637
Email: pamelalandiscpa@gmail.com

Complete Site Development

- Excavation
- Horse Rings
- Sanitary Sewer
- Storm Sewer
- Water
- Underground
- Utilities
- Curbing
- Paving
- Septic Systems

Testing, Design & Installation



PICKERING VALLEY CONTRACTORS

960 Pottstown Pike
Chester Springs, Pennsylvania 19425
Tel. 610.458.7200 Fax. 610.458.7217



CLASS SCHEDULE

The Rosato Oval – 8 AM start

Priority Ring

(Course walk only)

- #3 Itty Bitty Jumper .70m II.1
- #4 \$650 Itty Bitty Jumper Classic .70m II.2b
- #5 Preliminary Jumper .80m II.1
- #6 \$650 Preliminary Jumper Classic .80m II.2b
- #7 Low Ch/Ad Amateur Jumper .90m II.1
- #8 \$650 Low Ch/Ad Am. Jumper Classic .90m II.2b
- #9 \$1500 Open Gambler's Choice .95m (Joker 1.10m)
- #10 \$500 High Ch/Ad Jumper Speed Stake 1.10m II.1
- #11 \$1500 High Ch/Ad Jumper Classic II.2b
- #12 \$1000 Welcome Jumper Stake 1.15m II.1
- #13 \$8500 Kimberton Jumper Classic 1.25 II.2a



QUESTIONS?
 Email the Show Office
 or visit
horseshowing.com

DIRECTIONS TO SHOW

LUDWIG'S CORNER SHOW GROUNDS

5 Nantmeal Road

Glenmoore, PA 19343

Nearest Emergency Room

PHOENIXVILLE HOSPITAL (11 miles)

140 Nutt Road, Phoenixville

Nearest Level 1 Trauma Center/Emergency Room

PAOLI HOSPITAL (13 Miles)

255 West Lancaster Ave. Paoli

484.565.1000

Ring 2 – 8 AM start

(Hacking only before the show)

- #1 Warm Up (open card)
- #20 Baby Green Hunter 2' O/F
- #21 Baby Green Hunter O/F
- #22 Baby Green Hunter U/S
- #24 Young Hunter Pony US
- #25 Young Hunter US
- #43 Jr/Am Handler
- #26 Modified Hunter 2' O/F
- #27 Modified Hunter O/F
- #28 Modified Hunter U/S
- #14 Training Hunter O/F 2'3
- #15 Training Hunter O/F
- #16 Training Hunter U/S
- #30 TB Hunter 2'3 - 2'6 O/F
- #31 TB Hunter O/F
- #32 TB Hunter US
- #33 Pleasure Horse WT
- #34 Pleasure Horse WTC
- #35 Pleasure Horse 2'6 O/F
- #40 Low Hunter 2'9 O/F
- #41 Low Hunter O/F
- #42 Low Hunter U/S
- #45 Open Hunter 3' O/F
- #46 \$100 Open Hunter Stake
- #47 Open Hunter U/S

Attention:

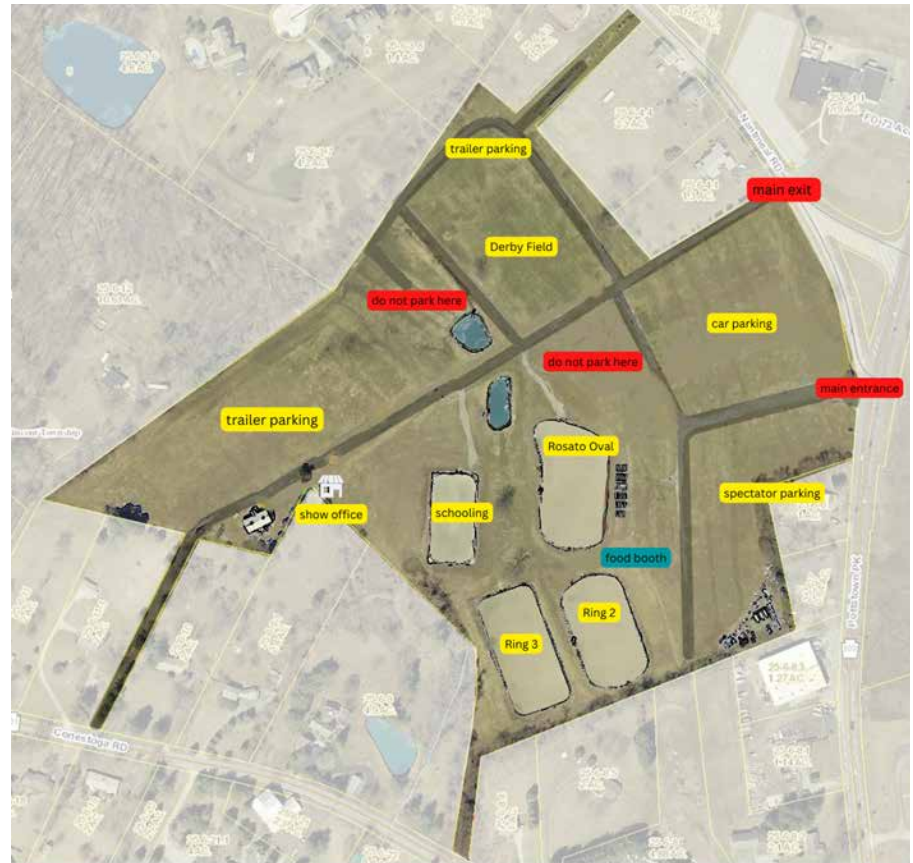
**UNDER SADDLE CLASSES
 will NOT be held up
 due to trainer conflict.
 Please be ready for your
 class.**

Ring 3 – 8 AM start

(7 AM - 7:45 AM Schooling only for S/S through Pleasure Pony)

- #60 Mini-Stirrup W
- #61 Mini-Stirrup WT Equitation
- #62 Mini-Stirrup WT Pleasure
- #63 Shortest Stirrup EQ W
- #64 Shortest Stirrup EQ WT
- #65 Shortest Stirrup EQ 4 X-rails
- #66 Short Stirrup EQ WT
- #67 Short Stirrup EQ WTC
- #68 Short Stirrup EQ 4 X-rails
- #69 Short Stirrup EQ 8 X-rails
- #70 Beginner Rider WT
- #71 Beginner Rider WTC
- #72 Beginner Rider 8 X-rails
- #17 Beginner Hunter O/F X-Rails
- #18 Beginner Hunter O/F X-Rails
- #19 Beginner Hunter U/S
- #73 Pleasure Pony WT
- #74 Pleasure Pony WTC
- #75 Pleasure Pony O/F 2'
- #1 Warm Up (open card)
- #77 Low Children's Hunter Pony 2' O/F
- #78 \$100 Low Children's Hunter Pony Stake
- #79 Low Children's Hunter Pony U/S
- #80 Pony Model
- #82 Children's Hunter Pony O/F
- #83 \$100 Children's Hunter Pony Stake
- #84 Children's Hunter Pony U/S
- #36 Open Equitation WT
- #37 Open Equitation WTC
- #38 Open Equitation 2'6 O/F
- #90 Low Children's Hunter Horse 2'6 O/F
- #91 \$100 Low Children's Hunter Horse Stake
- #92 Low Children's Hunter Horse U/S
- #94 Low Adult Hunter O/F
- #95 \$100 Low Adult Hunter Stake
- #96 Low Adult Hunter U/S

CLASS SCHEDULE, CONT.



Ludwig's Corner Horse Show Grounds

Derby Field – 9 AM start

- #100 Lead Line W
- #101 Lead Line W/T
- #102 Lead Line Advanced
- #103 Schooling Round (open card, open to all)
- #104 \$500 Fenceworks Jr/Am 2' Hunter Derby
- #105 Hunt Teams (open card)
- #106 Fox Hunter 2'6 O/F
- #107 \$250 Fox Hunter Handy
- #108 Fox Hunter U/S
- #110 Fox Hunter Equitation
- #109 \$1000 Beaver Hill Farm
Jr/Am 2'6 Hunter Derby



REGISTER
ONLINE

USHJA Outreach Competition Entry Form

Name of Horse or Pony		Color	Sex	Height	Age
Number					
Name of Rider One		Age	Classes (please use class numbers)	PONY: S M L	
	* USHJA ID#				
Name of Rider Two		Age	Classes (please use class numbers)		
	* USHJA ID#				
Rider One Contact Information:		Rider Two Contact Information:			
Name:		Name:			
Address:		Address:	* USHJA ID#:		
Email Address:		Email Address:	Address:		
Cell Phone:		Cell Phone:	Email Address:		
Signature:		Signature:	Cell Phone:		
Parent/Guardian Signature:		Parent/Guardian Signature:	Signature:		
Trainer Information:		Tax Payer Information: for receipt of prize money			
Name:		Name:	Classes _____		
Address:		Address:	Office/Grounds/EMT \$28 _____		
Signature:		SSN:	Post Entry \$25 _____		
Exp: __/__/__	CVV#	Credit Card Fee (\$3 or 3%) _____			
Billing Zip Code:		Total Due _____			
Name on Card					

ENTRY AGREEMENT - Release, Assumption of Risk, Waiver, and Indemnification. This document waives important legal rights. Read it carefully before signing. I AGREE in consideration for my participation in this Competition to the following: I AGREE that the "Competition" as used herein includes the USHJA and Competition Management, as well as all of their officials, officers, directors, employees, agents, personnel, volunteers and affiliates. I AGREE that I choose to participate voluntarily in the Competition with my horse, as a rider, handler, longeur, lessee, owner, agent, coach, trainer, or as parent or guardian of a junior exhibitor. I am fully aware and acknowledge that horse sports and the Competition involve inherent dangerous risks of accident, loss, and serious bodily injury including broken bones, head injuries, trauma, pain, suffering, or death. ("Harm"). I AGREE to hold harmless and release the USHJA and the Competition from all claims for money damages or otherwise for any Harm to me or my horse and for any Harm of any nature caused by me or my horse to others, even if the Harm arises or results, directly or indirectly, from the negligence of the USHJA or the Competition. I AGREE to expressly assume all risks of Harm to me or my horse, including Harm resulting from the negligence of the USHJA or the Competition. I AGREE to indemnify (that is, to pay any losses, damages, or costs incurred by) the USHJA and the Competition and to hold them harmless with respect to claims for Harm to me or my horse, and for claims made by others for any Harm caused by me or my horse while at the Competition. I understand that I am entitled to wear protective equipment without penalty, and I acknowledge that the USHJA strongly encourages me to do so while WARNING that no protective equipment can guard against all injuries. If I am a parent or guardian of a junior exhibitor, I consent to the child's participation and AGREE to all of the above provisions and AGREE to assume all of the obligations of this Release on the child's behalf. I represent that I have the requisite training, coaching and abilities to safely compete in this competition.

BY SIGNING ABOVE, I AGREE to be bound by the terms and provisions of this entry blank and all terms submitting this Agreement

* USHJA ID needed only if accruing points